



# PARTS CATALOG

Published

2008/7 (Jul.)

---

0CV10-G11800

# P R E F A C E

- 1. This Parts Catalog carries all parts incorporated in YANMAR Model YDG3000SE-L5EG2 & YDG4500SE-L5EG2 engine manufactured since June 1990.
  
2. Each illustration corresponds to the parts list on the following page.
  
3. When ordering parts, clearly write down the engine model and serial number, as well as the name and number of each part in your order sheet. This will help insure reliable delivery of the parts you have ordered.

# CONTENTS

MODEL : YDG3000,4500SE2 (SDMO)

PC NO : 0CV10-G11800

Fig.No. GROUP NAME

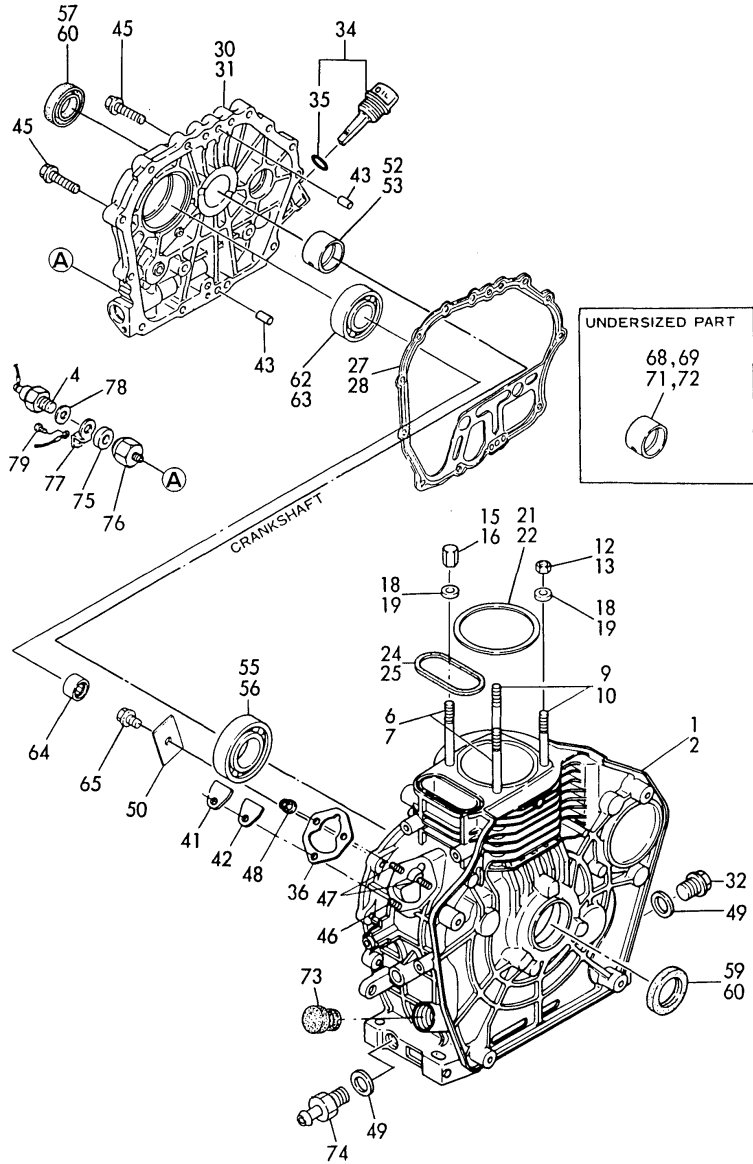
YDG3000,4500SE2

1. CYLINDER BLOCK
2. CRANK, ROD & PISTON
3. CYLINDER HEAD
4. AIR CLEANER & MUFFLER
5. LUB. OIL PUMP & GOVERNOR
6. COOLING, STARTING & CONTROL
7. FUEL INJECTION DEVICE
8. FUEL TANK & FUEL LINE
9. STARTING MOTOR & DYNAMO
10. TOOLS, LABELS & GASKET SET
11. SOUND-PROOF CASE(YDG3000SE)
12. SOUND-PROOF CASE(YDG4500SE)
13. GENERATOR(YDG3000SE)
14. GENERATOR(YDG4500SE)
15. PANEL BOX(YDG3000SE)
16. PANEL BOX(YDG4500SE)

Fig.No. GROUP NAME

Fig.1. CYLINDER BLOCK

Fig. 1 CYLINDER BLOCK



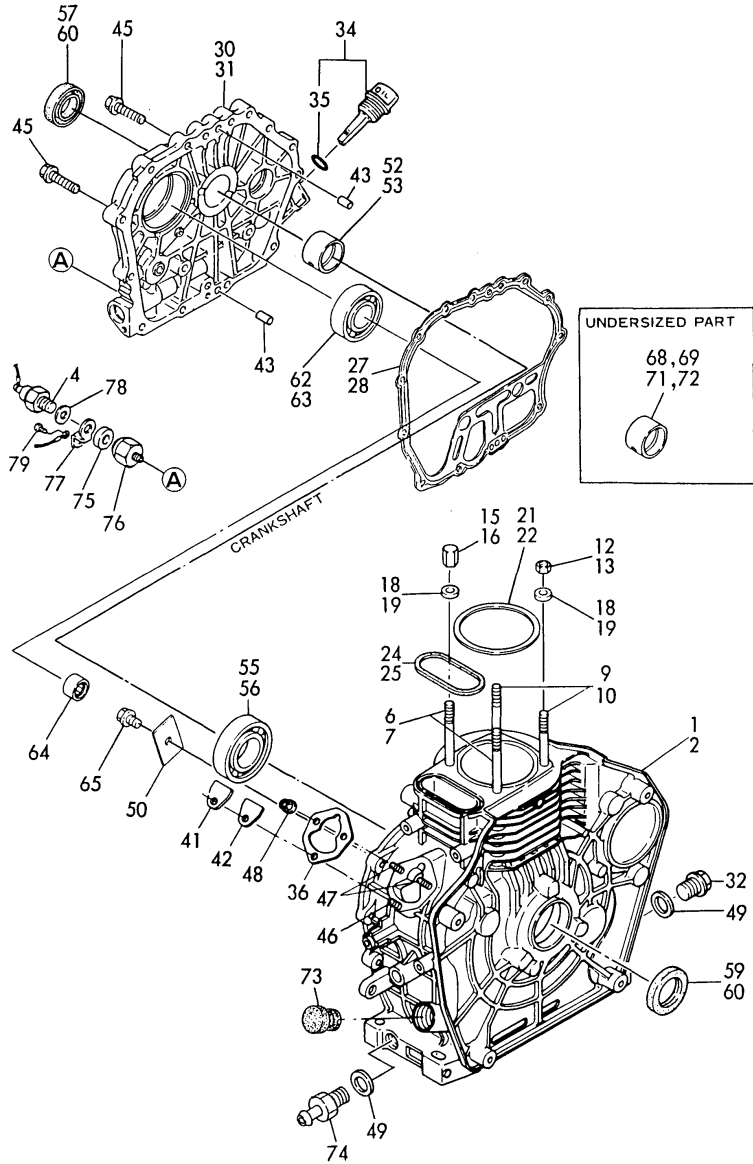
Remarks  
 (1) REPAIR PART.  
 (2) UNDERSIZED(U.S=0.25) PART.  
 (3) UNDERSIZED(U.S=0.50) PART.

(A)=3000SE-L5EG2  
 (B)=4500SE-L5EG2  
 (C)=  
 (D)=  
 (E)=  
 (F)=

REF.	LEV.	PARTS NO.	DESCRIPTION	QTY						I	R
				(A)	(B)	(C)	(D)	(E)	(F)		
1	1	714371-01560	BLOCK ASSY, CYLINDER	1							
2	1	714671-01560	BLOCK ASSY, CYLINDER		1						
4	1	183250-39450	SWITCH, OIL PRESSURE	1	1						
6	1	114350-01200	STUD, CYL. HEAD	2							
7	1	114650-01230	STUD, CYL. HEAD		2						
9	1	114350-01210	STUD, CYL. HEAD	2							
10	1	114650-01240	STUD, CYL. HEAD		2						
12	1	114350-01220	NUT 9	2							
13	1	105025-01220	NUT, CYL. HEAD		2						
15	1	114350-01250	NUT 9	2							
16	1	114650-01250	NUT 10		2						
18	1	105225-01240	WASHER	4							
19	1	114650-01260	WASHER		4						
21	1	114350-01340	GASKET, CYL. HEAD	1							
22	1	114650-01340	GASKET, CYL. HEAD		1						
24	1	114350-01380	O-RING	1							
25	1	114650-01380	O-RING		1						
27	1	114350-01412	GASKET, CRANK CASE	1							
28	1	114650-01412	GASKET, CRANK CASE		1						
30	1	183350-01450	COVER, CRANK CASE	1							
31	1	114660-01470	COVER (D),CRANK CASE		1						
32	1	105425-01690	PLUG M16	1	1						
34	1	160910-01740	CAP, W/LUB.OIL GAUGE	1	1						
35	2	24311-000180	O-RING 1A P-18.0	1	1						
36	1	114250-01800	SHIM SET	1	1						
41	1	114250-01830	COVER, INSPEC.WINDOW	1	1						
42	1	114250-01840	GASKET	1	1						
43	1	22312-080120	PARALLEL PIN 8X12	2	2						
45	1	26106-080352	BOLT M 8X 35 PLATED	15	16						
46	1	26226-060182	STUD M 6X 18 PLATED	1	1						
47	1	26226-060222	STUD M 6X 22 PLATED	2	2						
48	1	26366-060002	NUT M 6	3	3						
49	1	43400-500490	SEAL WASHER 16	2	2						
50	1	114250-02030	RETAINER, BEARING	1	1						
52	1	114350-02100	BEARING, MAIN	1							1
53	1	114650-02100	BEARING, MAIN		1						1
55	1	114350-02113	BALL BEARING	1							
56	1	114650-02150	BALL BEARING		1						
57	1	160110-02220	SEAL, OIL	1							
59	1	160110-02220	SEAL, OIL	1							
60	1	24423-355008	SEAL, OIL		2						
62	1	24101-062060	BALL BEARING	1							
63	1	24101-062070	BALL BEARING		1						
64	1	24162-152112	NEEDLE BEARING	1	1						2
65	1	26106-080122	BOLT M 8X 12 PLATED	1	1						
66	1	114250-35150	PIPE, LUB. OIL	1	1						
68	1	114350-02200	MAIN BEARING US=0.25	1							2
69	1	114650-02200	MAIN BEARING US=0.25		1						2
71	1	114350-02210	MAIN BEARING US=0.50	1							3
72	1	114650-02210	MAIN BEARING US=0.50		1						3
73	1	160110-01870	PLUG, RUBBER W/SCREW	1	1						

# Fig.1. CYLINDER BLOCK

Fig. 1 CYLINDER BLOCK



Remarks  
 (1) REPAIR PART.  
 (2) UNDERSIZED(U.S=0.25) PART.  
 (3) UNDERSIZED(U.S=0.50) PART.

## OCV10-G11800 1. CYLINDER BLOCK

(A)=3000SE-L5EG2  
 (B)=4500SE-L5EG2  
 (C)=

(D)=  
 (E)=  
 (F)=

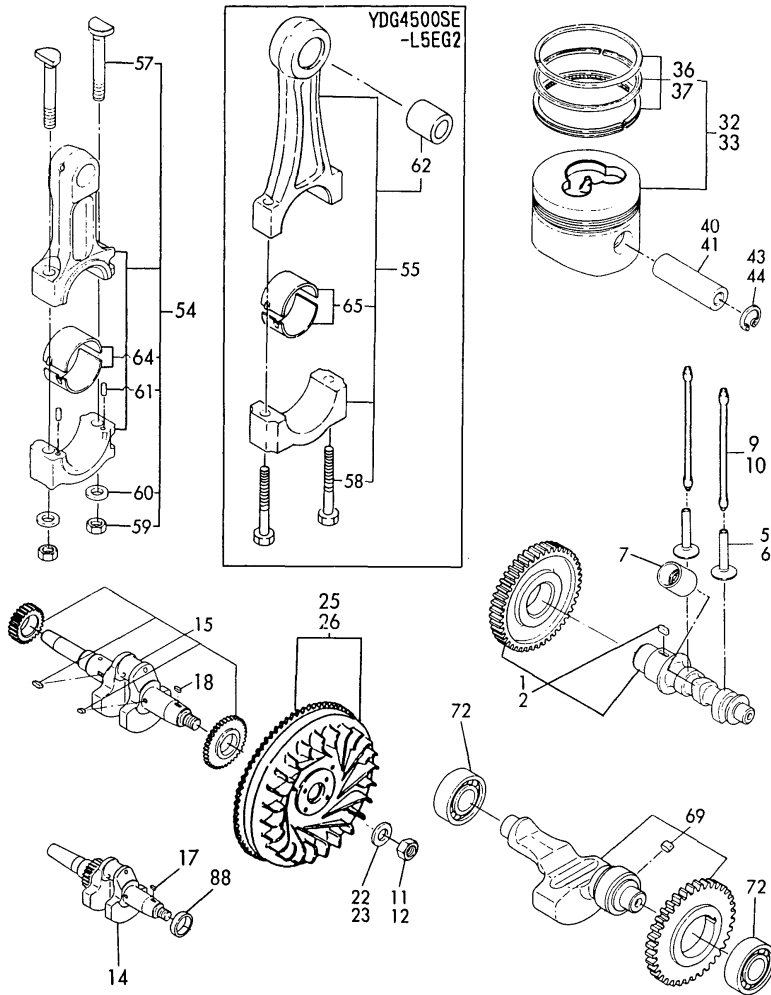
REF.	LEV.	PARTS NO.	DESCRIPTION	Q'TY						I	R
				(A)	(B)	(C)	(D)	(E)	(F)		
74	1	183366-08351	NIPPLE, DRAIN	1	1						
75	1	183366-08290	WASHER, RUBBER	1	1						
76	1	183366-39460	JOINT, INSULATION	1	1						
77	1	171022-39470	TERMINAL, EARTH	1	1						
78	1	22117-100000	WASHER 10	1	1						
79	1	26557-040082	SCREW M 4X 8	1	1						

Fig.2. CRANK, ROD & PISTON

(A)=3000SE-L5EG2  
(B)=4500SE-L5EG2  
(C)=

(D)=  
(E)=  
(F)=

Fig.2 CRANK, ROD & PISTON



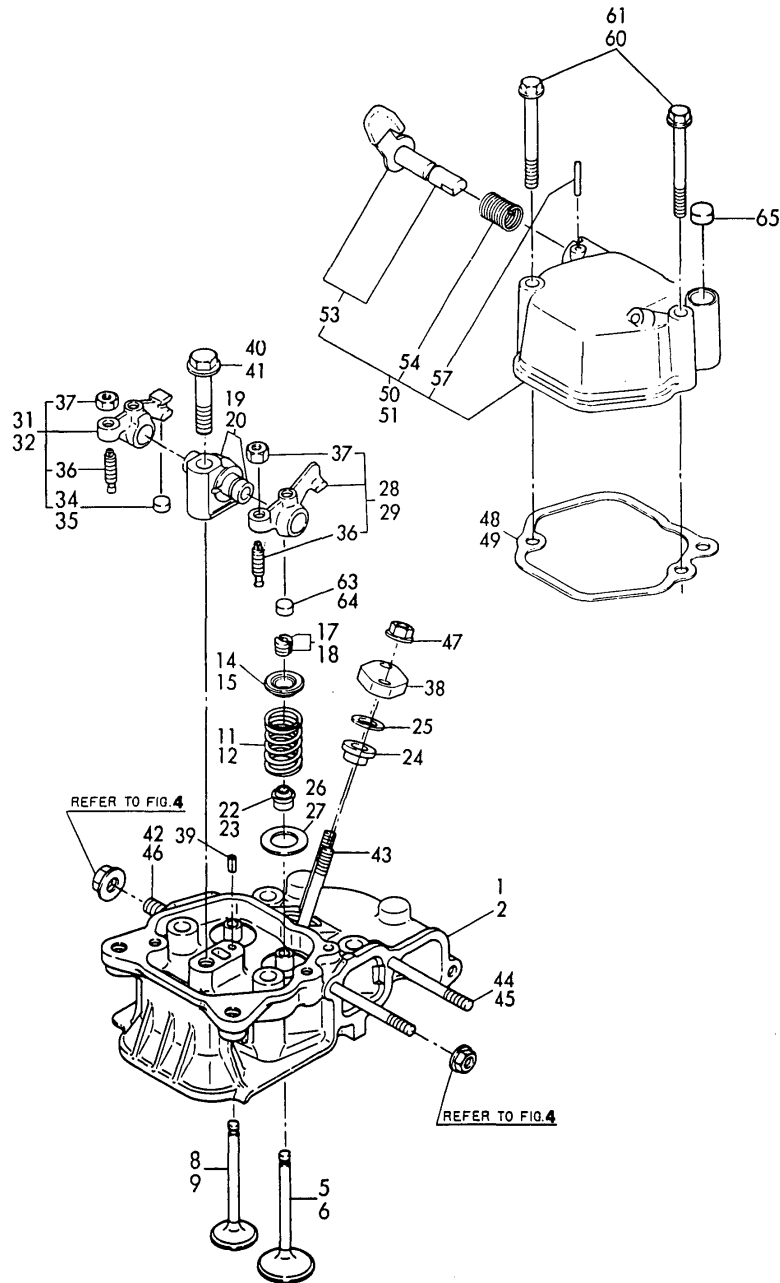
UNDER SIZED BEARING CRANKPIN	OVER SIZED PISTON W/RINGS	OVER SIZED RING SET
82, 83 85, 86	46, 47 74, 75	50, 51 78, 79

Remarks  
 (1) OVERSIZED(O.S=0.25) PART.  
 (2) OVERSIZED(O.S=0.50) PART.  
 (3) UNDERSIZED(U.S=0.25) PART.  
 (4) UNDERSIZED(U.S=0.50) PART.

REF.	LEV.	PARTS NO.	DESCRIPTION	QTY						I	R
				(A)	(B)	(C)	(D)	(E)	(F)		
1	1	714880-14580	CAMSHAFT ASSY	1							
2	1	714660-14582	CAMSHAFT(D) ASSY.		1						
5	1	114250-14200	TAPPET, SUC./EXH.	2							
6	1	114650-14200	TAPPET, SUC./EXH.		2						
7	1	114250-14260	TAPPET, FUEL	1	1						
9	1	114350-14450	ROD, PUSH	2							
10	1	114650-14401	ROD, PUSH		2						
11	1	103854-01221	NUT M16	1							
12	1	122710-01220	NUT (M18)		1						
14	1	783392-21700	CRANKSHAFT ASSY	1							
15	1	783692-21700	CRANKSHAFT ASSY		1						
17	1	22512-040120	KEY 4X 12	1							
18	1	22512-050140	KEY 5X 14		1						
22	1	114250-21550	WASHER, FLYWHEEL	1							
23	1	114650-21551	WASHER, FLYWHEEL		1						
25	1	183366-21590	FLYWHEEL W/RING GEAR	1							
26	1	114662-21691	FLYWHEEL W/RING GEAR		1						
32	1	714380-22720	PISTON W/RINGS	1							
33	1	714660-22723	PISTON W/RINGS		1						
36	2	714350-22502	RING SET, PISTON	1							
37	2	714650-22502	RING SET, PISTON		1						
40	1	114350-22301	PIN, PISTON D=21	1							
41	1	114650-22300	PIN, PISTON		1						
43	1	22252-000210	CIRCLIP 21	2							
44	1	129792-22400	CIRCLIP 23		2						
46	1	714380-22620	PISTON W/RING(OS=.25	1							1
47	1	714660-22623	PISTON W/RING(OS=.25		1						1
50	2	714350-22542	RING SET O.S=0.25	1							1
51	2	714650-22542	RING SET O.S=0.25		1						1
54	1	714350-23704	ROD ASSY, CONNECTING	1							
55	1	714650-23700	ROD ASSY, CONNECTING		1						
57	2	114250-23200	BOLT, ROD	2							
58	2	104200-23201	BOLT, ROD		2						
59	2	114250-23220	NUT, ROD BOLT	2							
60	2	114250-23250	WASHER	2							
61	2	22312-030080	PARALLEL PIN 3X 8	2							
62	2	124060-23100	BUSH, PISTON PIN		1						
64	2	714350-23600	BEARING, CRANKPIN	1							
65	2	714650-23600	BEARING, CRANKPIN		1						
69	1	714689-28510	SHAFT ASSY, BALANCER		1						
72	1	24101-062034	BALL BEARING		2						
74	1	714380-22580	PISTON W/RING(OS=0.5	1							2
75	1	714660-22580	PISTON W/RING(OS=0.5		1						2
78	2	714350-22550	RING SET O.S=0.50	1							2
79	2	714650-22550	RING SET O.S=0.50		1						2
82	1	714350-23610	BEARING,PIN(U.S=0.25	1							3
83	1	714650-23610	BEARING,PIN(U.S=0.25		1						3
85	1	714350-23620	BEARING,PIN(U.S=0.50	1							4
86	1	714650-23620	BEARING,PIN(U.S=0.50		1						4
88	1	183350-21350	SPACER	1							

Fig.3. CYLINDER HEAD

Fig.3 CYLINDER HEAD



(A)=3000SE-L5EG2  
(B)=4500SE-L5EG2  
(C)=

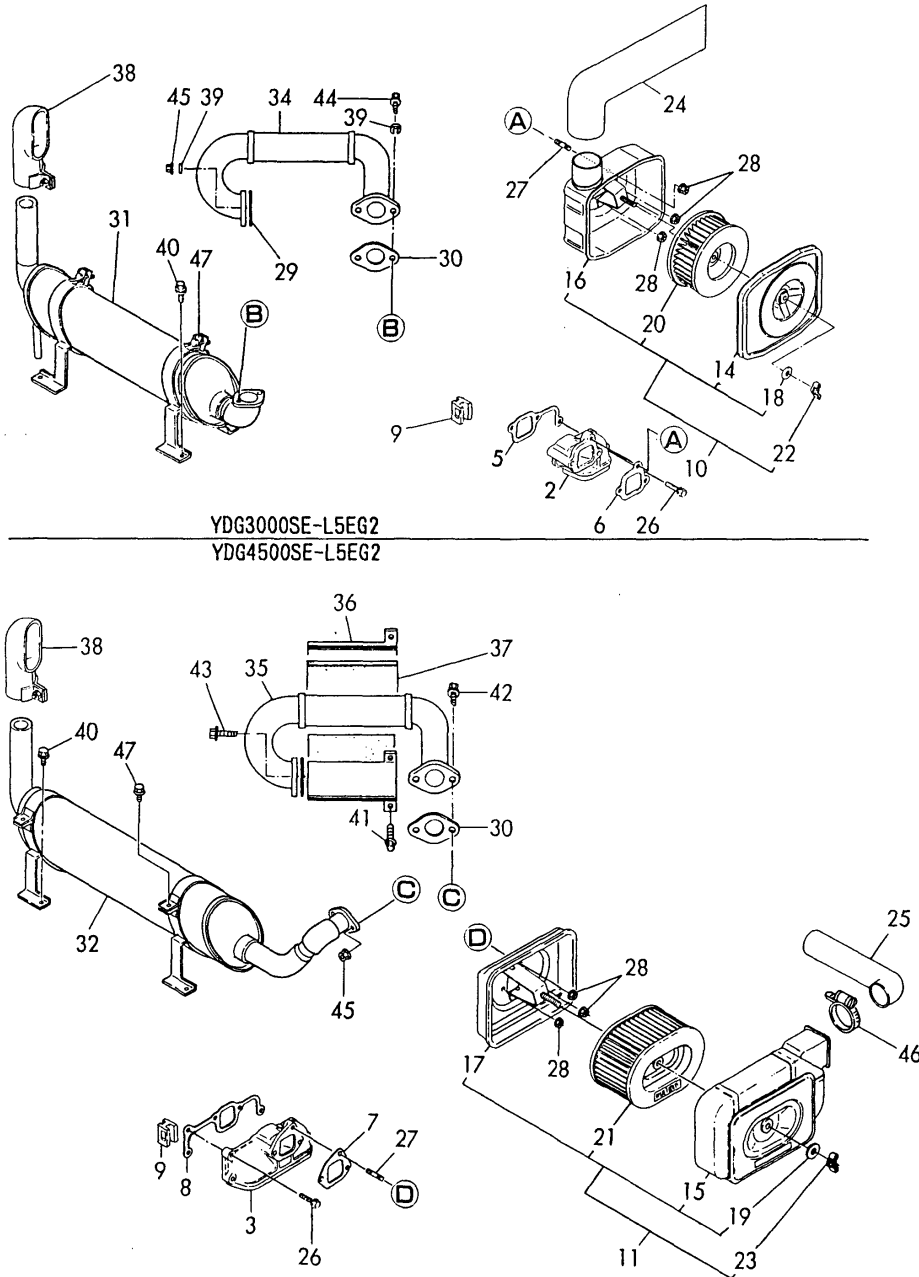
(D)=  
(E)=  
(F)=

REF.	LEV.	PARTS NO.	DESCRIPTION	Q'TY						I	R
				(A)	(B)	(C)	(D)	(E)	(F)		
1	1	114350-11021	HEAD ASSY, CYLINDER	1							
2	1	114650-11010	HEAD ASSY, CYLINDER		1						
5	1	114350-11101	VALVE, SUCTION	1							
6	1	114650-11100	VALVE, SUCTION		1						
8	1	114350-11113	VALVE, EXHAUST	1							
9	1	114654-11110	VALVE, EXHAUST		1						
11	1	114350-11120	SPRING, VALVE	2							
12	1	114650-11121	SPRING, VALVE		2						
14	1	101158-11180	RETAINER, SPRING	2							
15	1	119620-11180	RETAINER, SPRING		2						
17	1	27310-060001	COTTER 6	2							
18	1	27310-070001	COTTER 7		2						
19	1	114250-11290	SUPPORT, ROCKER ARM	1							
20	1	114650-11261	SUPPORT, ROCKER ARM		1						
22	1	114350-11340	SEAL, VALVE STEM	2							
23	1	114650-11340	SEAL, VALVE STEM		2						
24	1	114250-11460	GASKET, NOZZLE	1	1						
25	1	114350-11470	SPACER	1	1						
26	1	114250-11600	WASHER	2							
27	1	114650-11600	WASHER		2						
28	1	114250-11651	ARM ASSY, INTAKE	1							
29	1	114650-11652	ARM ASSY, INTAKE		1						
31	1	714370-11660	ARM ASSY, EXHAUST	1							
32	1	714670-11660	ARM ASSY, EXHAUST		1						
34	2	105010-11490	CAP, VALVE	1							
35	2	104211-11370	CAP, VALVE		1						
36	2	114250-11240	SCREW, VALVE ADJUST.	2	2						
37	2	26756-060002	LOCK NUT M 6 PLATED	2	2						
38	1	114250-11900	RETAINER, NOZZLE	1	1						
39	1	22351-040008	SPRING PIN 4X 8	1	1						
40	1	26106-080452	BOLT M 8X 45 PLATED	1							
41	1	26106-100552	BOLT M10X 55 PLATED		1						
42	1	26216-080182	STUD M 8X 18 PLATED	2							
43	1	26226-060502	STUD M 6X 50	2	2						
44	1	26226-060552	STUD M 6X 55	2							
45	1	26226-060752	STUD M 6X 75		2						
46	1	26226-080202	STUD M 8X 20 PLATED		2						
47	1	26366-060002	NUT M 6	2	2						
48	1	114250-11310	GASKET, BONNET	1							
49	1	114650-11310	GASKET, BONNET		1						
50	1	114250-11951	BONNET ASSY, HEAD	1							
51	1	114650-11951	BONNET ASSY, HEAD		1						
53	2	114250-03591	SHAFT ASSY, DECOMP.	1	1						
54	2	114250-03640	SPRING	1	1						
57	2	22312-030160	PARALLEL PIN 3X16	1	1						
60	1	26106-060552	BOLT M 6X 55 PLATED	2							
61	1	26106-060702	BOLT M 6X 70 PLATED		2						
63	1	105010-11490	CAP, VALVE	1							
64	1	104211-11370	CAP, VALVE		1						
65	1	129100-61850	PLUG (12)	1							

Fig.4. AIR CLEANER & MUFFLER

(A)=3000SE-L5EG2 (D)=  
 (B)=4500SE-L5EG2 (E)=  
 (C)= (F)=

Fig.4 AIR CLEANER & SILENCER



YDG3000SE-L5EG2  
 YDG4500SE-L5EG2

REF.	LEV.	PARTS NO.	DESCRIPTION	QTY						I	R
				(A)	(B)	(C)	(D)	(E)	(F)		
2	1	114350-12011	PIPE, AIR INTAKE	1							
3	1	114650-12020	PIPE, AIR INTAKE		1						
5	1	114350-12201	GASKET, AIR INTAKE	1							
6	1	114250-12210	GASKET, AIR CLEANER	1							
7	1	114650-12210	GASKET, AIR CLEANER		1						
8	1	114650-12300	GASKET, AIR INTAKE		1						
9	1	114650-12350	GROMMET	1	1						
10	1	783366-12560	CLEANER ASSY, AIR	1							
11	1	783671-12560	CLEANER ASSY, AIR		1						
14	3	114250-12520	COVER, AIR CLEANER	1							
15	3	183671-12520	COVER, AIR CLEANER		1						
16	3	183366-12530	CASE, AIR CLEANER	1							
17	3	114650-12530	CASE, AIR CLEANER		1						
18	3	114250-12560	WASHER, SEAL	1							
19	3	114252-12560	WASHER, SEAL		1						
20	3	114250-12580	ELEMENT, WET AIR	1							
21	3	114650-12590	ELEMENT W/PRE-FILTER		1						
21A	4	114650-12540	ELEMENT, WET AIR		1						
21B	4	114650-12550	PRE-FILTER		1						
22	2	114250-12550	WING NUT M6	1							
23	2	114252-12550	WING NUT M8		1						
24	1	183366-12590	HOSE	1							
25	1	183671-12590	HOSE		1						
26	1	26106-060252	BOLT M 6X 25 PLATED	2	3						
27	1	26226-060142	STUD M 6X 14 PLATED	1	1						
28	1	26366-060002	NUT M 6	3	3						
29	1	114250-13200	GASKET, MUFFLER	1							
30	1	183671-13210	GASKET, EXH.PIPE	1	2						
31	1	183366-13300	MUFFLER ASSY	1							
32	1	183671-13300	MUFFLER		1						
34	1	183366-13601	PIPE, SILENCER	1							
35	1	183671-13600	PIPE, EXHAUST		1						
36	1	183671-13650	COVER		1						
37	1	183671-13660	SEAL, SPONGE		1						
38	1	114658-13800	EXTENSION, EXH.	1	1						
39	1	22213-080000	SPRING WASHER 8	4							
40	1	26014-060142	BOLT M 6X 14	4							
41	1	26106-060122	BOLT M 6X 12 PLATED		2						
42	1	26106-080162	BOLT M 8X 16 PLATED		4						
43	1	26106-080202	BOLT M 8X 20 PLATED		2						
44	1	26106-080282	BOLT M 8X 28 PLATED	2							
45	1	26366-080002	NUT 8	2	4						
46	1	23000-060000	CLAMP 60		1						
47	1	26106-060202	BOLT M 6X 20 PLATED	2	2						

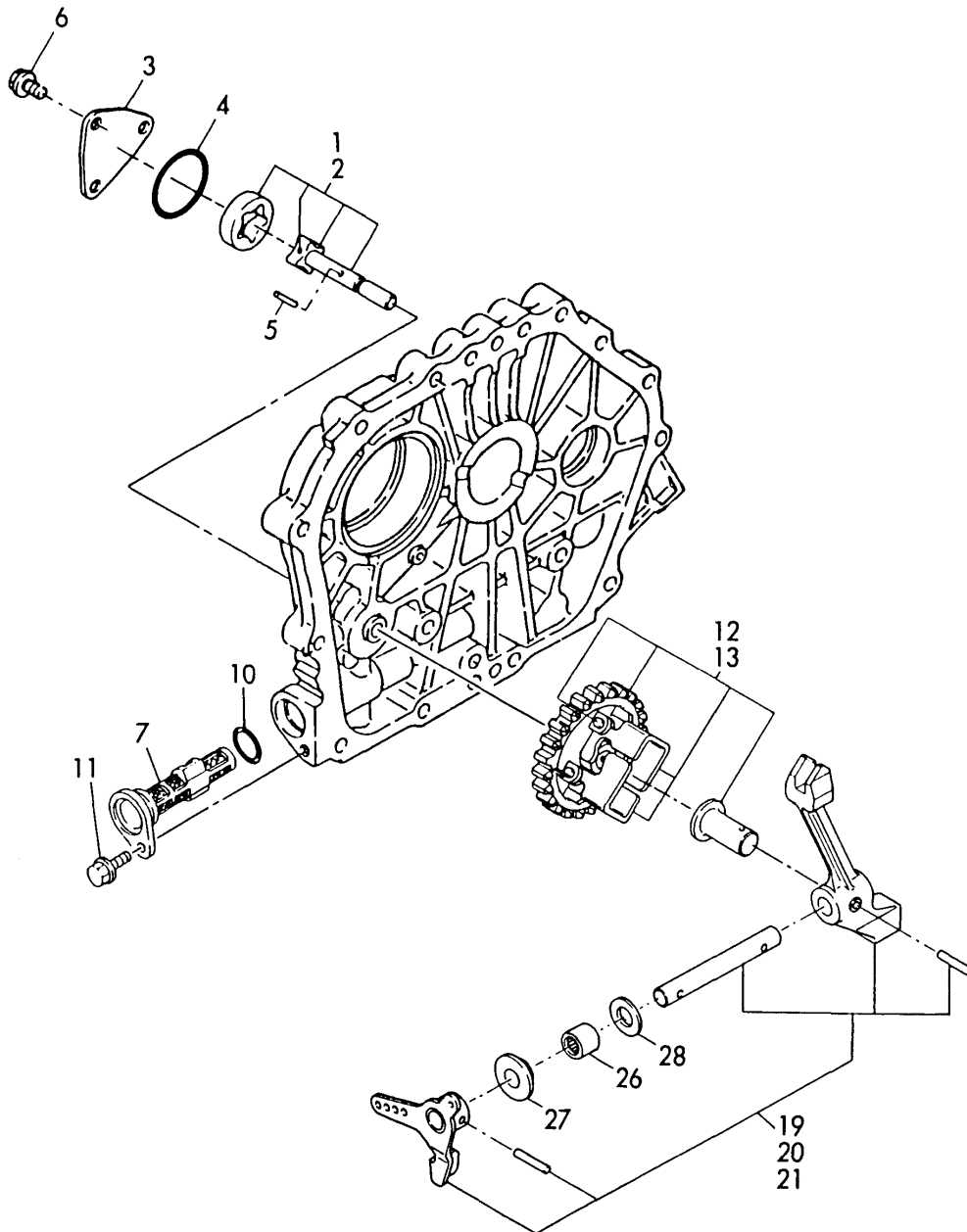


Fig.5. LUB. OIL PUMP & GOVERNOR

(A)=3000SE-L5EG2  
 (B)=4500SE-L5EG2  
 (C)=

(D)=  
 (E)=  
 (F)=

Fig.5 LUB. OIL PUMP & GOVERNOR



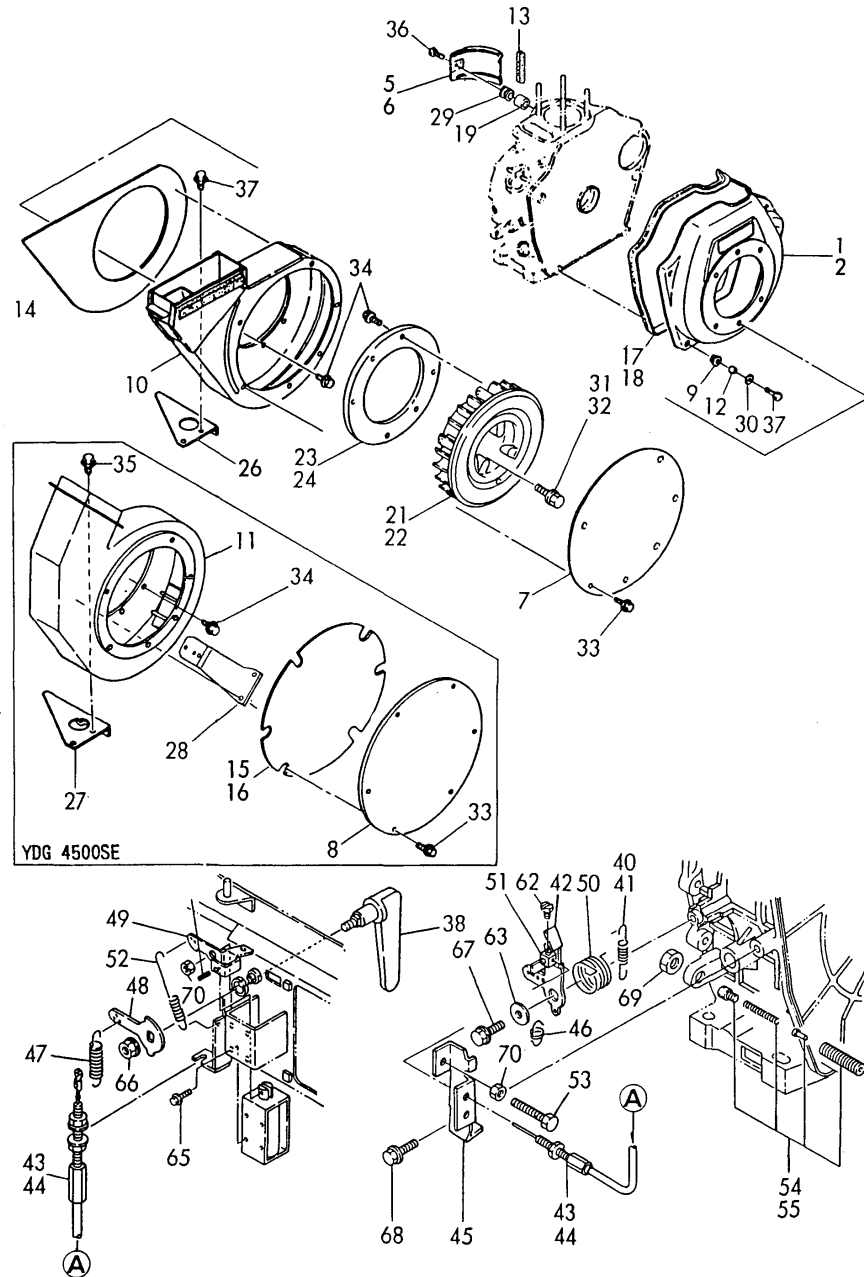
REF.	LEV.	PARTS NO.	DESCRIPTION	QTY						I	R
				(A)	(B)	(C)	(D)	(E)	(F)		
1	1	114250-32010	PUMP ASSY, LUB.OIL	1							
2	1	114650-32010	PUMP ASSY, LUB.OIL		1						
3	1	114250-32070	COVER, LUB. OIL PUMP	1	1						
4	1	103338-32570	O-RING	1	1						
5	1	22312-030160	PARALLEL PIN 3X16	1	1						
6	1	26476-060142	BOLT M 6X 14	3	3						
7	1	114250-35070	STRAINER, LUB. OIL	1	1						
10	1	24341-000224	O-RING 1A S-22.4	1	1						
11	1	26106-060162	BOLT M 6X 16 PLATED	1	1						
12	1	714770-61700	GOVERNOR ASSY	1							
13	1	714970-61700	GOVERNOR ASSY		1						
20	1	714350-61500	LEVER ASSY, GOVERNOR	1							
21	1	714650-61500	LEVER ASSY, GOVERNOR		1						
26	1	121450-61520	NEEDLE BEARING FJ810	2	2						
27	1	114250-61900	BUSH, THRUST	1	1						
28	1	22137-080000	WASHER 8, POLISHED	1	1						

Fig.6. COOLING, STARTING & CONTROL

(A)=3000SE-L5EG2  
(B)=4500SE-L5EG2  
(C)=

(D)=  
(E)=  
(F)=

Fig.6 COOLING STARTING & CONTROL



REF.	LEV.	PARTS NO.	DESCRIPTION	QTY						I	R
				(A)	(B)	(C)	(D)	(E)	(F)		
1	1	183366-45111	CASE, FAN	1							
2	1	114660-45110	CASE, FAN		1						
5	1	114350-45201	COVER	1							
6	1	114650-45200	COVER, CYLINDER		1						
7	1	183366-45220	COVER	1							
8	1	183671-45310	COVER, SCROLL		1						
9	1	114250-45300	SHOCK ABSORBER	5	4						
10	1	183366-45300	SCROLL	1							
11	1	183671-45301	SCROLL		1						
12	1	114250-45310	COLLAR	5	4						
13	1	114350-45320	RUBBER, SEAL	1	1						
14	1	183366-45320	VIBRATION DAMPER (A)	1							
15	1	183671-45330	DAMPER(B)		1						
16	1	114654-45341	DAMPER(C)		1						
17	1	114250-45330	SEAL, FAN CASE	1							
18	1	114666-45330	SEAL, FAN CASE		2						
19	1	114350-45340	COLLAR	1	1						
21	1	183366-45600	FAN, COOLING	1							
22	1	114660-45400	FAN, COOLING		1						
23	1	183366-45410	COVER, FAN	1							
24	1	114660-45450	COVER, FAN		1						
26	1	183366-45460	STAY, SCROLL	1							
27	1	183671-45460	STAY, SCROLL		1						
28	1	183671-45480	STAY, SCROLL		1						
29	1	183720-55210	GROMMET	1	1						
30	1	160120-76940	WASHER	5	4						
31	1	26014-080252	BOLT M 8X 25		3						
32	1	26014-080302	BOLT M 8X 30	3							
33	1	26106-060082	BOLT M 6X 8 PLATED	7	6						
34	1	26106-060122	BOLT M 6X 12 PLATED	14	19						
35	1	26476-060142	BOLT M 6X 14		2						
35A	1	26106-060142	BOLT M 6X 14 PLATED	1							
35B	1	26557-060142	SCREW M 6X 14	1							
36	1	26476-060202	BOLT M 6X 20	1	1						
37	1	26476-060252	BOLT M 6X 25	5	4						
38	1	183267-66350	LOCK LEVER	1	1						
40	1	114870-66010	SPRING, REGULATOR	1							
41	1	114970-66010	SPRING, REGULATOR		1						
42	1	114252-66060	HANDLE, REGULATOR	1	1						
43	1	183266-66110	CABLE, REMO-CON.	1							
44	1	183666-66111	CABLE, REMO-CON.		1						
45	1	114252-66120	BRACKET	1	1						
46	1	114250-66200	SPRING, RETURN	1	1						
47	1	183266-66210	SPRING, LOCK LEVER	1	1						
48	1	183266-66230	LOCK LEVER(A)	1	1						
49	1	183267-66240	LEVER, LOCK	1	1						
50	1	114252-66252	SPRING, RETURN	1	1						
52	1	183250-66331	SPRING, LEVER	1	1						
53	1	114250-66440	BOLT, ADJUSTING		1						
54	1	114250-66550	TORQUE SPRING ASSY	1							
55	1	114650-66600	TORQUE SPRING ASSY		1						

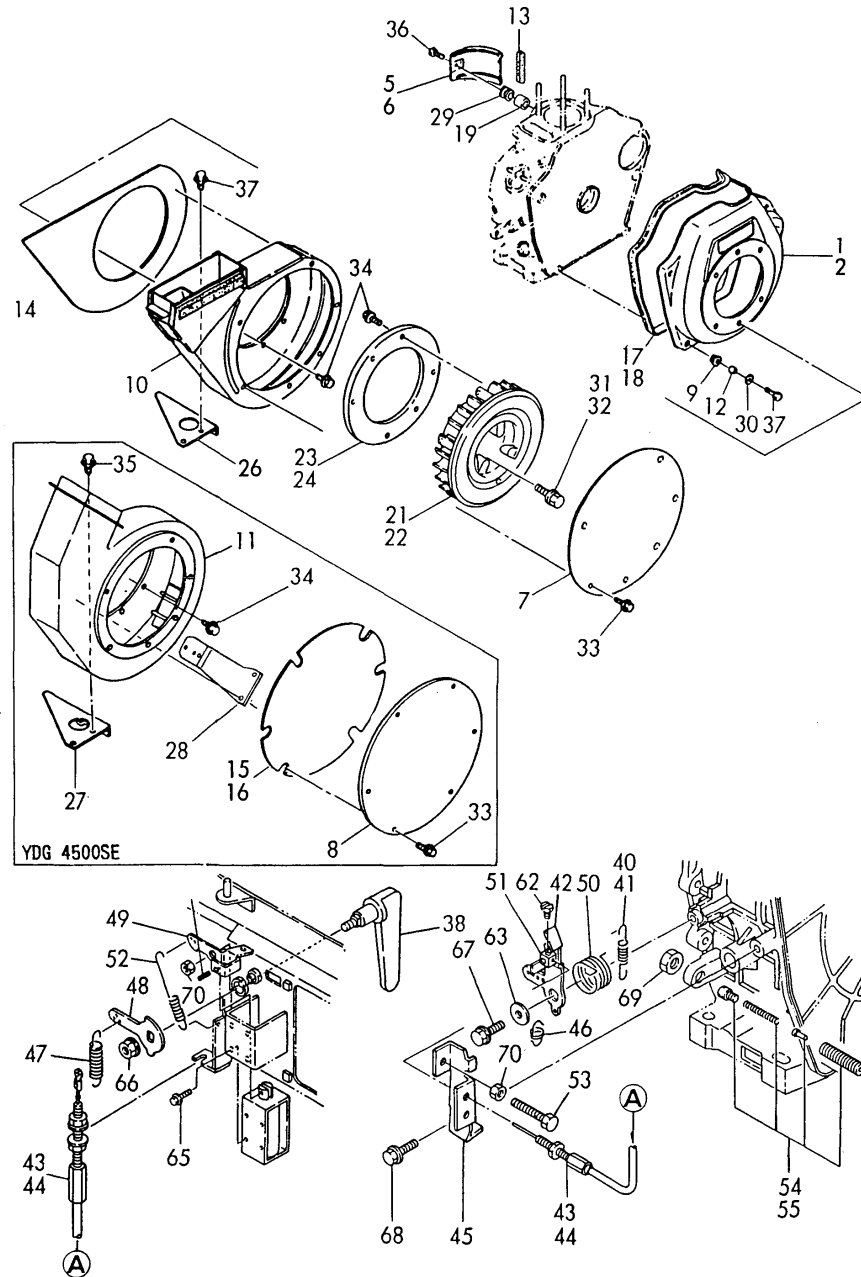
N:Old  $\begin{matrix} \text{Yes} \\ \text{No} \end{matrix}$  New, Q:Old  $\begin{matrix} \text{No} \\ \text{Yes} \end{matrix}$  New, R:Old  $\begin{matrix} \text{Yes} \\ \text{No} \end{matrix}$  New, S:Old  $\begin{matrix} \text{No} \\ \text{Yes} \end{matrix}$  New, W:Add, Z:Discontinued, F:Interchangeable by set, K:Q'ty Change  
 ++ CONTINUE ++  
 (C)Copy Rights YANMAR CO.,LTD.

Fig.6. COOLING, STARTING & CONTROL

(A)=3000SE-L5EG2  
(B)=4500SE-L5EG2  
(C)=

(D)=  
(E)=  
(F)=

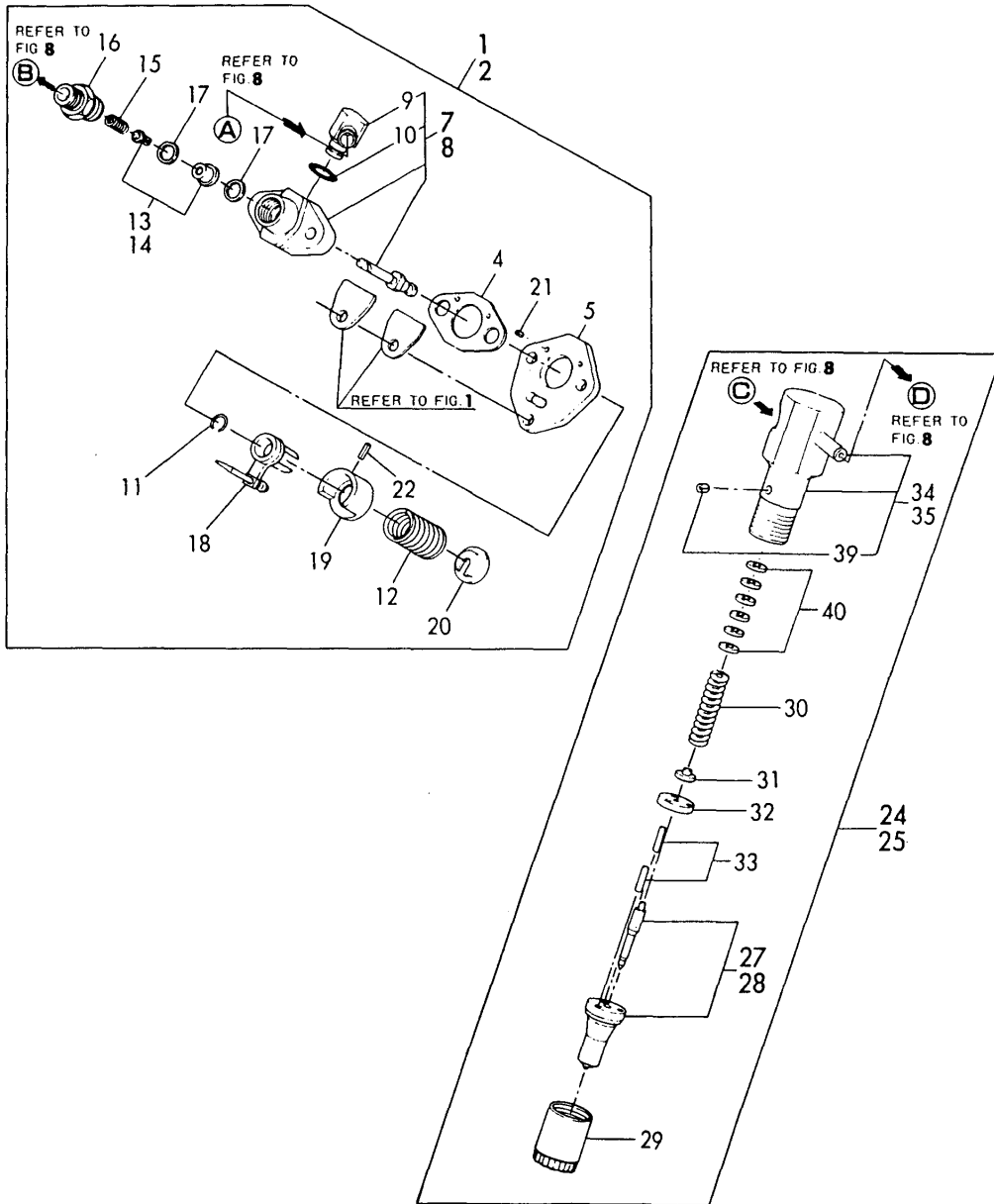
Fig.6 COOLING STARTING & CONTROL



REF.	LEV.	PARTS NO.	DESCRIPTION	QTY						I	R
				(A)	(B)	(C)	(D)	(E)	(F)		
62	1	105225-66990	SCREW	1	1						
63	1	183350-55130	WASHER	1	1						
64	1	22351-030012	SPRING PIN 3X12	1	1						
65	1	26023-030082	SCREW M 3X 8	4	4						
66	1	26757-080002	LOCK NUT M 8 PLATED	1	1						
66A	1	22217-080000	SPRING WASHER 8	1	1						
67	1	26476-060142	BOLT M 6X 14	1	1						
68	1	26476-060202	BOLT M 6X 20	1	1						
69	1	26696-100002	NUT M10	1	1						
70	1	26757-060002	LOCK NUT M 6 PLATED	1	1						
71	1	26347-060002		1	1						

Fig.7. FUEL INJECTION DEVICE

Fig.7 FUEL INJECTION DEVICE



(A)=3000SE-L5EG2  
(B)=4500SE-L5EG2  
(C)=

(D)=  
(E)=  
(F)=

REF.	LEV.	PARTS NO.	DESCRIPTION	QTY						I	R
				(A)	(B)	(C)	(D)	(E)	(F)		
1	1	783350-51701	PUMP ASSY, F.INJECT	1							
2	1	783650-51700	PUMP ASSY, F.INJECT		1						
4	2	105546-51020	GASKET	1	1						
5	2	114250-51080	PLATE	1	1						
7	2	183350-51200	BODY, F. I. PUMP	1							
8	2	183650-51100	BODY, F. I. PUMP		1						
9	3	114250-51180	JOINT	1	1						
10	3	114250-51190	O-RING	1	1						
11	2	114250-51150	SNAP RING	1	1						
12	2	114250-51160	SPRING	1	1						
13	2	114250-51300	VALVE ASSY, DELIVERY	1							
14	2	114650-51300	VALVE ASSY, DELIVERY		1						
15	2	105546-51330	SPRING, DELIV. VALVE	1	1						
16	2	114250-51340	HOLDER, F.I.P.DELIVE	1	1						
17	2	124550-51350	GASKET, DELIVERY	2	2						
18	2	114250-51600	LEVER ASSY, CONTROL	1	1						
19	2	114250-51640	SEAT (A), SPRING	1	1						
20	2	114250-51650	SEAT (B), SPRING	1	1						
21	2	22351-020006	SPRING PIN 2X 6	2	2						
22	2	22351-030008	SPRING PIN 3X 8	1	1						
24	1	714870-53100	VALVE ASSY, F.INJECT	1							
25	1	714650-53100	VALVE ASSY, F.INJECT		1						
27	2	114870-53000	NOZZLE ASSY,F.INJECT	1							
28	2	114650-53000	NOZZLE ASSY,F.INJECT		1						
29	2	114250-53080	NUT, NOZZLE CASE	1	1						
30	2	114250-53120	SPRING, NOZZLE	1	1						
31	2	114250-53130	SPRING, SEAT	1	1						
32	2	114250-53140	PLATE, STOP	1	1						
33	2	114250-53210	PIN	2	2						
34	2	114250-53300	HOLDER ASSY, NOZZLE	1							
35	2	114650-53300	HOLDER ASSY, NOZZLE		1						
39	3	114250-53331	PIN, SPRING	1	1						
40	2	114250-53400	SHIM PACK	1	1						

Fig.8. FUEL TANK & FUEL LINE

(A)=3000SE-L5EG2

(B)=4500SE-L5EG2

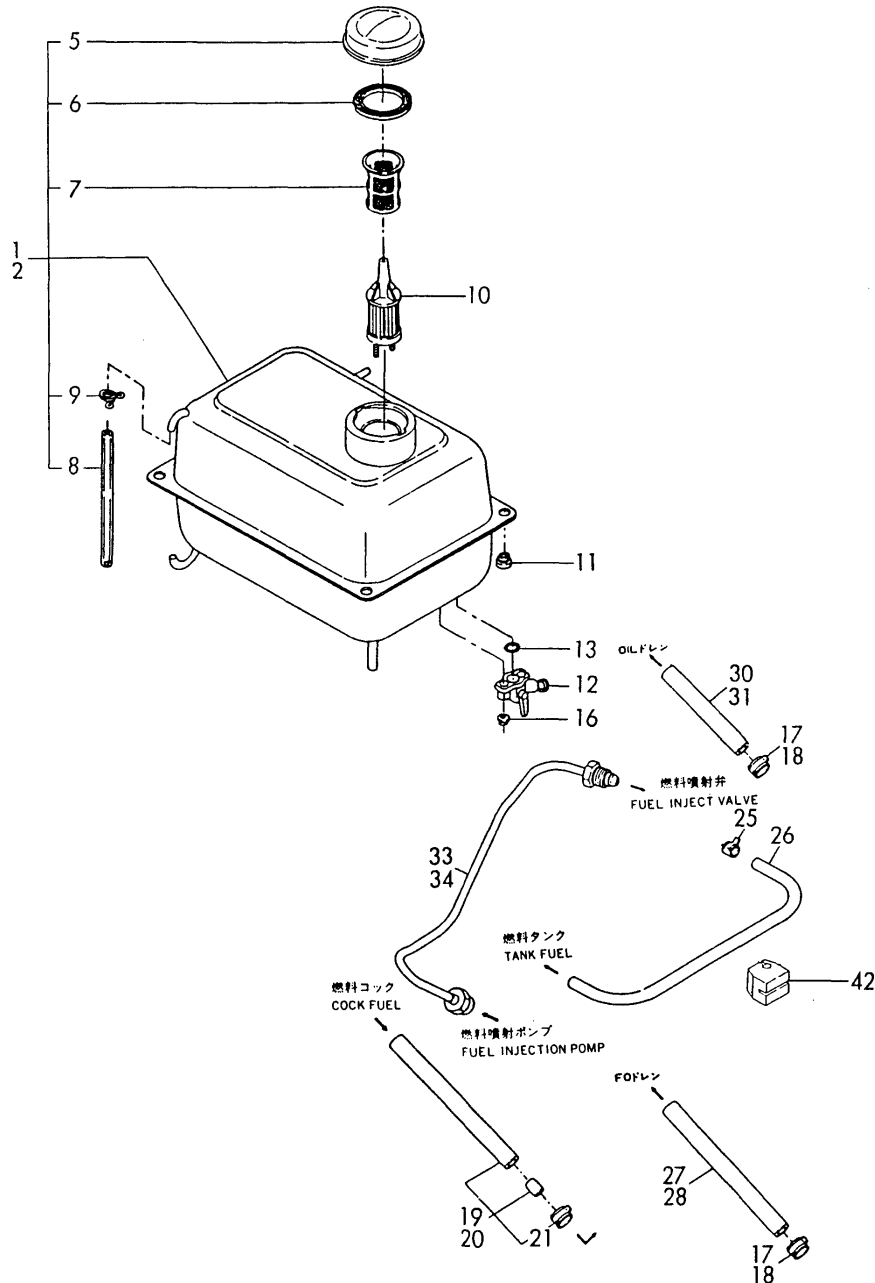
(C)=

(D)=

(E)=

(F)=

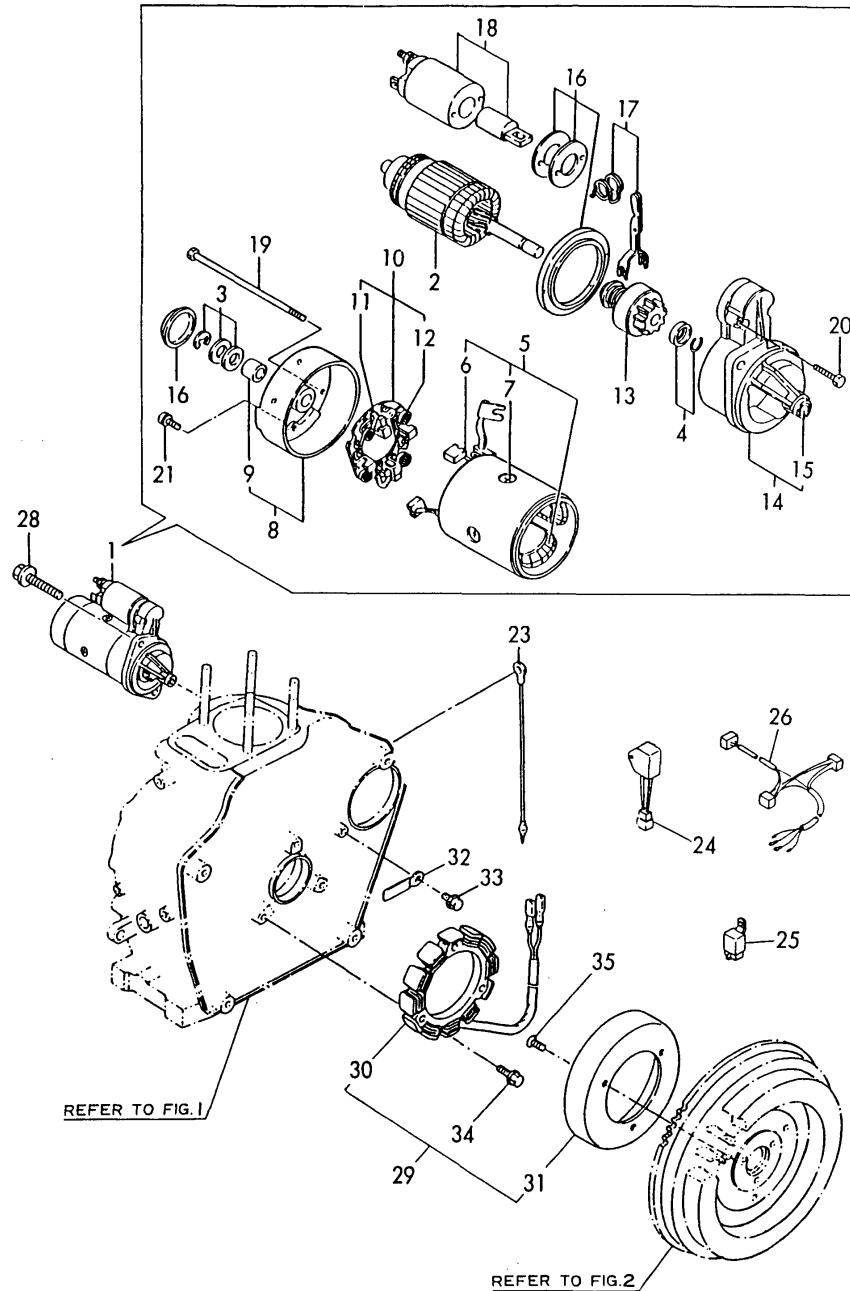
Fig.8 FUEL TANK & FUEL LINE



REF.	LEV.	PARTS NO.	DESCRIPTION	QTY						I	R
				(A)	(B)	(C)	(D)	(E)	(F)		
1	1	783366-55700	TANK ASSY, FUEL	1							
2	1	783671-55700	TANK ASSY, FUEL		1						
5	2	105015-55040	CAP, FUEL TANK	1	1						
6	2	101504-55051	GASKET	1	1						
7	2	160710-55100	STRAINER, FUEL TANK	1	1						
8	2	183366-55150	PIPE, GAUGE	1	1						
9	2	103854-55220	CLAMP	2	2						
10	1	183366-55120	STRAINER	1	1						
11	1	183720-55210	GROMMET	4	4						
12	1	183250-55320	COCK, FUEL	1	1						
13	2	24311-000150	O-RING 1A P-15.0	1	1						
16	1	26366-060002	NUT M 6	2	2						
17	1	171008-03990	CLAMP 25	2	2						
18	1	106990-44660	BAND, HOSE	2	2						
19	1	183366-59010	PIPE, FUEL OIL	1							
20	1	183671-59010	PIPE, FUEL OIL		1						
21	2	106990-44660	BAND, HOSE	3	3						
25	1	124722-59050	CLAMP 9	2	2						
26	1	183671-59060	PIPE, FUEL RETURN	1	1						
27	1	183366-59330	PIPE, FUEL DRAIN	1							
28	1	183666-59330	PIPE, FUEL DRAIN		1						
30	1	183366-59351	PIPE, FUEL DRAIN	1							
31	1	183666-59351	PIPE, DRAIN		1						
33	1	114350-59800	PIPE, FUEL INJECTION	1							
34	1	114650-59800	PIPE, FUEL INJECTION		1						
42	1	114650-59850	BRACKET, PIPE		1						

Fig.9. STARTING MOTOR & DYNAMO

Fig. 9 STARTING MOTOR & DYNAMO



(A)=3000SE-L5EG2

(B)=4500SE-L5EG2

(C)=

(D)=

(E)=

(F)=

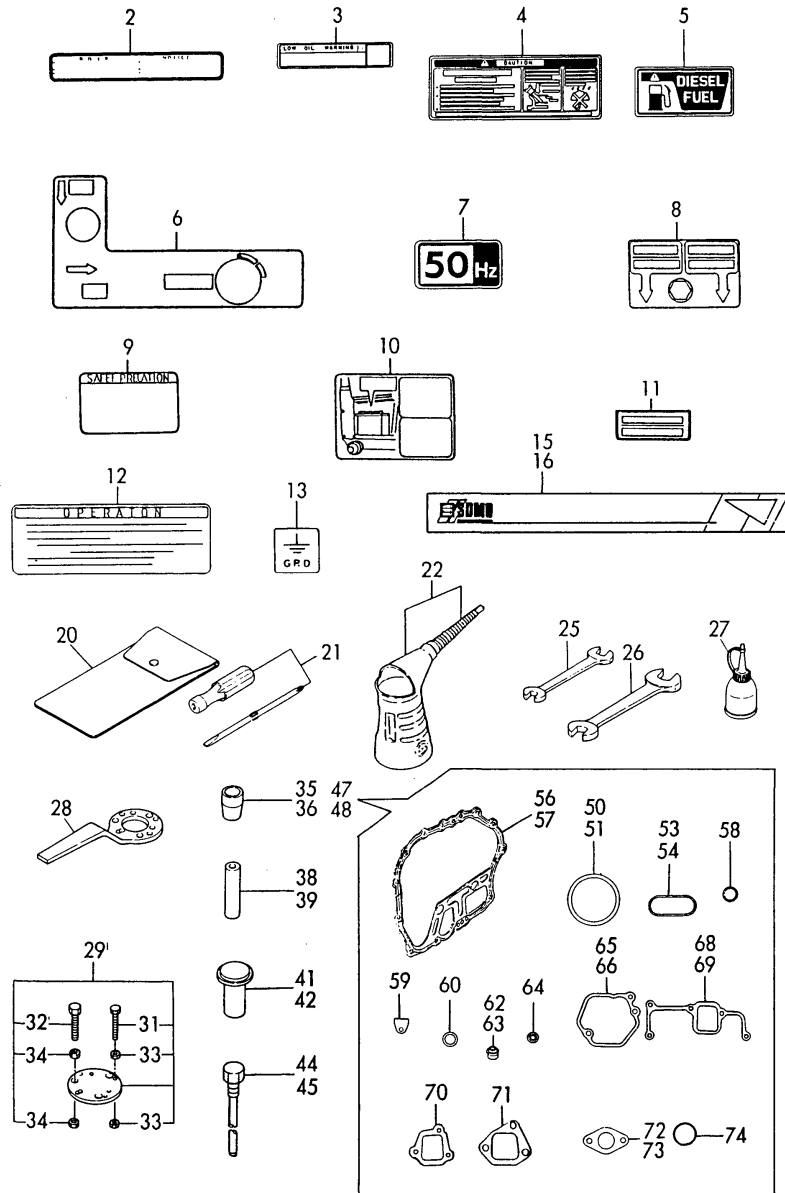
REF.	LEV.	PARTS NO.	DESCRIPTION	QTY						I	R
				(A)	(B)	(C)	(D)	(E)	(F)		
1	1	114362-77010	STARTER MOTOR (D)	1	1						
2	2	X211461104	ARMATURE	1	1						
3	2	X21148110	WASHER SET, THRUST	1	1						
4	2	X21147155	STOPPER SET, PINION	1	1						
5	2	X211412105	COIL ASSY, FIELD	1	1						
6	3	X21145312	BRUSH (+)	2	2						
7	3	X21143215	SCREW, CORE	4	4						
8	2	X211473002	COVER, REAR	1	1						
9	3	X21145352	METAL	1	1						
10	2	X211489001	HOLDER ASSY, BRUSH	1	1						
11	3	X21148313	BRUSH (-)	1	1						
12	3	X21149314	SPRING, BRUSH	3	3						
13	2	X211445508	PINION ASSY	1	1						
14	2	X211416603	HOUSING ASSY, GEAR	1	1						
15	3	X21145352	METAL	1	1						
16	2	X211478006	COVER KIT, DUST	1	1						
17	2	X211456013	LEVER KIT, SHIFT	1	1						
18	2	X211427501	SWITCH, MAGNETIC	1	1						
19	2	X211468005	THROUGH BOLT	2	2						
20	2	X21145867	BOLT 6	2	2						
21	2	X21142835	SCREW SET	1	1						
23	1	183350-77400	WIRE, LEAD	1	1						
24	1	183256-78300	REGULATOR	1	1						
25	1	183256-78310	RELAY	1	1						
26	1	183267-91390	HARNESS, WIRE	1	1						
28	1	26106-100302	BOLT M10X 30 PLATED	2	2						
29	1	114351-78250	DYNAMO ASSY	1	1						
30	2	114351-78750	STATOR ASSY	1	1						
31	2	114351-78760	WHEEL, DYNAMO	1	1						
32	1	160710-78710	CLAMP, CORD	1	1						
33	1	26476-060142	BOLT M 6X 14	1	1						
34	1	26476-060202	BOLT M 6X 20	3	3						
35	1	26577-060142	SCREW M 6X 14	3	3						

Fig.10. TOOLS, LABELS & GASKET SET

(A)=3000SE-L5EG2  
(B)=4500SE-L5EG2  
(C)=

(D)=  
(E)=  
(F)=

Fig.10 TOOLS/LABELS & GASKET SET

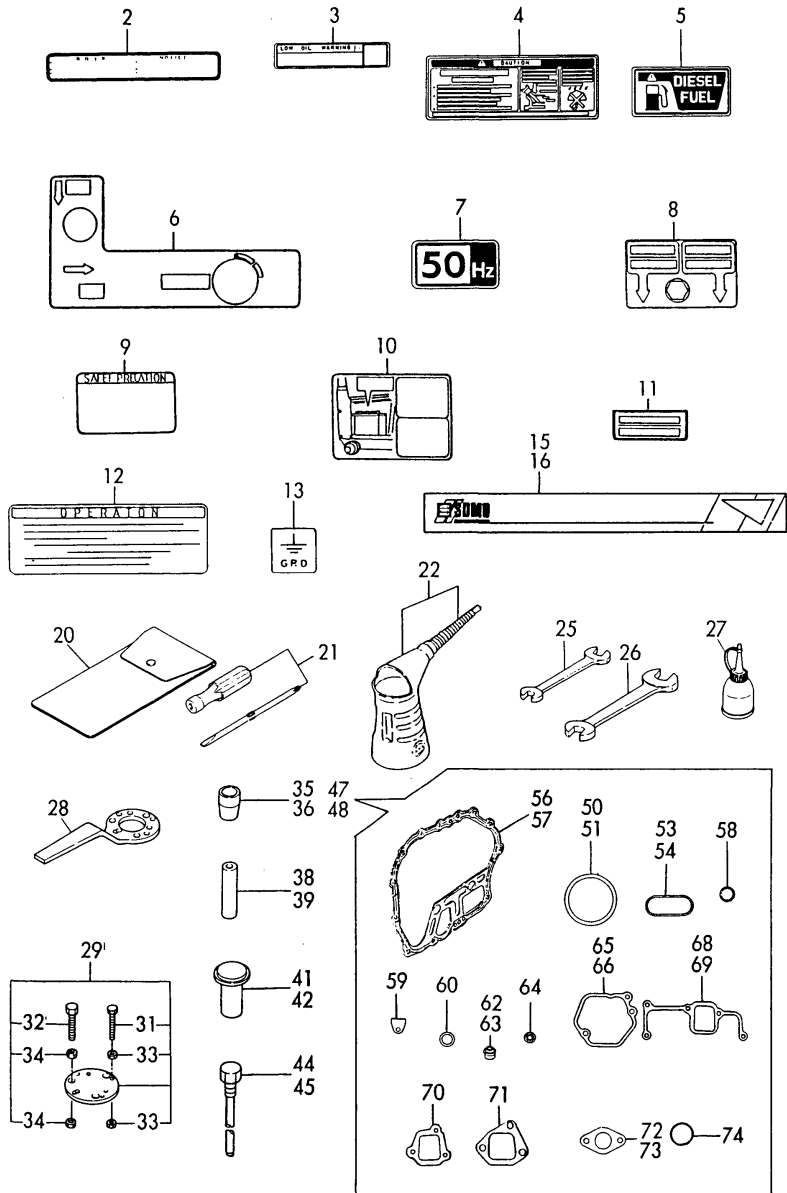


Remarks  
(1) OPTIONAL PART.

REF.	LEV.	PARTS NO.	DESCRIPTION	QTY						I	R
				(A)	(B)	(C)	(D)	(E)	(F)		
2	1	114650-07450	LABEL, AIR CLEANER		1						
3	1	183251-07130	LABEL, OIL WARNING	1	1						
4	1	183251-07170	LABEL, CUATION	1	1						
5	1	183251-07190	LABEL, DIESEL FUEL	1	1						
6	1	183267-07230	LABEL	1	1						
8	1	183366-07240	LABEL, DAIN	1	1						
9	1	183266-07250	LABEL, START.MOTOR	1	1						
10	1	183366-07251	LABEL, F.O. COCK	1	1						
11	1	183366-07280	LABEL, AIR CLEANER	1	1						
12	1	183367-07370	LABEL, OPERATION	1	1						
13	1	183210-07390	LABEL, G.R.D.	1	1						
15	1	583356-07130	LABEL (YDG3000SE)	2							
16	1	583656-07130	LABEL (YDG4500SE)		2						
20	1	114250-92600	BAG, TOOL	1	1						
21	1	160330-92730	SCREWDRIVER	1	1						
22	1	7E4133-99290	JUG ASSY, OIL	1	1						
25	1	28110-100120	WRENCH 10X12	1	1						
26	1	28110-140170	WRENCH 14X17	1	1						
27	1	28210-000150	FEEDER, OIL	1	1						
28	1	114250-92101	F.W. LOCKING HANDLE	1	1						
29	1	114250-92130	REMOVER, FLYWHEEL	1	1						
31	2	26116-060454	BOLT M 6X 45 PLATED	4	4						
32	2	26116-080454	BOLT M 8X 45 PLATED	3	3						
33	2	26716-060002	NUT M6	8	8						
34	2	26716-080002	NUT M 8	6	6						
35	1	114361-92300	GUIDE, OIL SEAL	1							
36	1	114661-92300	GUIDE, OIL SEAL		1						
38	1	114350-92311	INSTALLING TOOL	1							
39	1	114650-92310	INSTALLING TOOL		1						
41	1	114350-92350	INSTALLING TOOL	1							
42	1	114650-92350	INSTALLING TOOL		1						
44	1	183350-92360	REMOVER, GEN. ROTOR	1							
45	1	183662-92350	ROTOR REMOVER		1						
47	1	714350-92602	GASKET SET	1							
48	1	714650-92601	GASKET SET		1						
50	2	114350-01340	GASKET, CYL. HEAD	1							
51	2	114650-01340	GASKET, CYL. HEAD		1						
53	2	114350-01380	O-RING	1							
54	2	114650-01380	O-RING		1						
56	2	114350-01412	GASKET, CRANK CASE	1							
57	2	114650-01412	GASKET, CRANK CASE		1						
58	2	24311-000180	O-RING 1A P-18.0	2	2						
59	2	114250-01840	GASKET	1	1						
60	2	43400-500490	SEAL WASHER 16	2	2						
62	2	114350-11340	SEAL, VALVE STEM	2							
63	2	114650-11340	SEAL, VALVE STEM		2						
64	2	114250-11460	GASKET, NOZZLE	1	1						
65	2	114250-11310	GASKET, BONNET	1							
66	2	114650-11310	GASKET, BONNET		1						
68	2	114350-12201	GASKET, AIR INTAKE	1							
69	2	114650-12300	GASKET, AIR INTAKE		1						

Fig.10. TOOLS, LABELS & GASKET SET

Fig. **10** TOOLS/LABELS & GASKET SET



Remarks  
(1) OPTIONAL PART.

(A)=3000SE-L5EG2  
(B)=4500SE-L5EG2  
(C)=

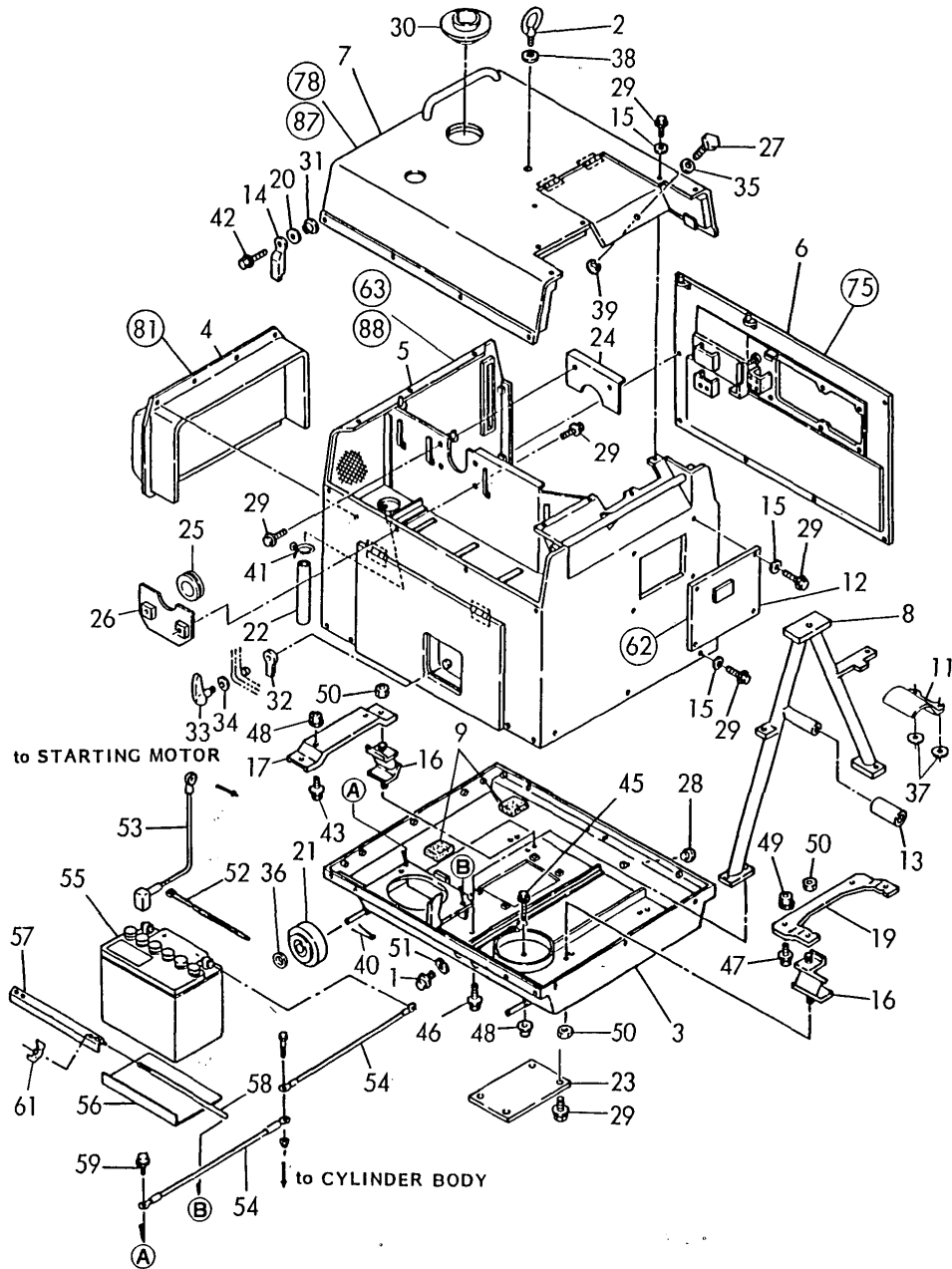
(D)=  
(E)=  
(F)=

REF.	LEV.	PARTS NO.	DESCRIPTION	QTY						I	R
				(A)	(B)	(C)	(D)	(E)	(F)		
70	2	114250-12210	GASKET, AIR CLEANER	1							
71	2	114650-12210	GASKET, AIR CLEANER		1						
72	2	114250-13200	GASKET, MUFFLER	1							
73	2	114650-13200	GASKET, MUFFLER		1						
74	2	103338-32570	O-RING	1	1						



Fig.11. SOUND-PROOF CASE(YDG3000SE)

Fig. 11 SOUND-PROOF CASE (YDG3000SE-L5EG2)



(A)=3000SE-L5EG2

(B)=4500SE-L5EG2

(C)=

(D)=

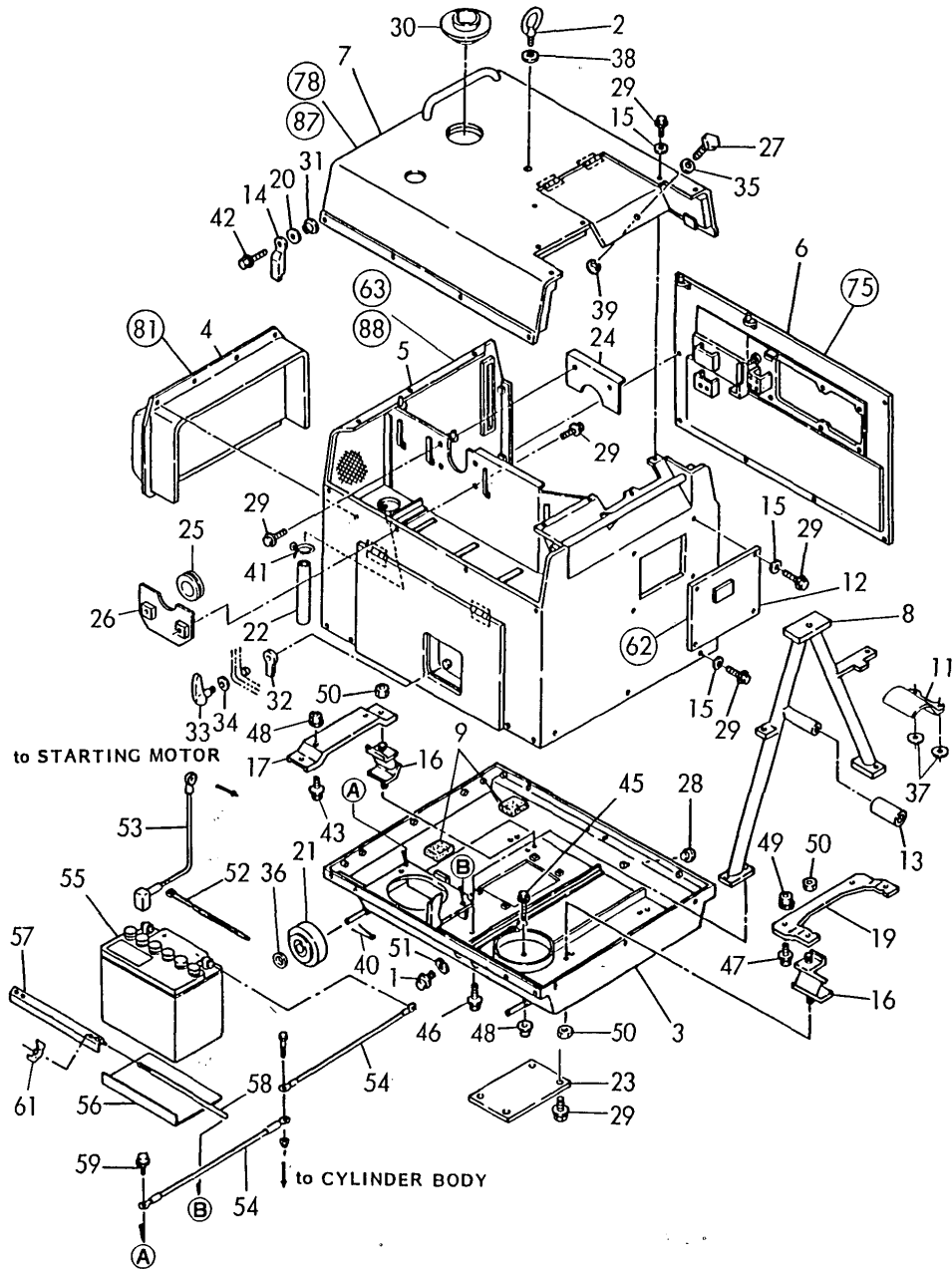
(E)=

(F)=

REF.	LEV.	PARTS NO.	DESCRIPTION	Q'TY						I	R
				(A)	(B)	(C)	(D)	(E)	(F)		
1	1	105425-01690	PLUG M16	2							
2	1	105990-07920	STUD	1							
3	1	183366-08051	CASE, LOWER	1							
4	1	183366-08080	COVER, CASE (R)	1							
5	1	183366-08091	CASE, REAR	1							
6	1	183267-08100	CASE, FRONT	1							
7	1	183366-08111	CASE, UPPER	1							
8	1	183366-08120	FRAME, LIFTING	1							
9	1	183366-08140	SPONGE	2							
11	1	183366-08150	STOPPER	1							
12	1	183366-08170	COVER, CASE	1							
13	1	183366-08180	RUBBER, STOPPER	1							
14	1	183366-08190	STOPPER, DOOR	1							
15	1	183366-08210	WASHER 6	18							
16	1	183250-08220	DAMPER	4							
17	1	183392-08250	STAY, DAMPER (REAR)	1							
19	1	183392-08230	STAY, DAMPER (FRONT)	1							
20	1	183366-08290	WASHER, RUBBER	1							
21	1	183266-08360	WHEEL	4							
22	1	183366-08400	PIPE, DRAIN	1							
23	1	183266-08460	COVER	1							
24	1	183366-08460	FLANGE	1							
25	1	183366-08470	BLIND COVER	1							
26	1	183366-08480	FLANGE	1							
27	1	183101-08550	SET BOLT, DOOR	1							
28	1	183210-08810	NUT, EARTH	1							
29	1	183366-08900	BOLT W/WASHER M6X14	52							
30	1	183366-55210	GROMMET	1							
31	1	160810-55480	PIECE	1							
32	1	194312-61810	CAM, LOCK	1							
33	1	194555-61820	LEVER, LOCK	1							
34	1	194312-61840	WASHER BWW-626	1							
35	1	183350-55130	WASHER	1							
36	1	22117-120000	WASHER 12	4							
37	1	22137-080000	WASHER 8, POLISHED	2							
38	1	22137-140000	WASHER 14, POLISHED	1							
39	1	22272-000050	CIRCLIP E- 5	1							
40	1	22417-320250	COTTER PIN 3.2X25	4							
41	1	23000-022000	CLAMP 22	1							
42	1	183267-08910	BOLT	1							
43	1	26106-080252	BOLT M 8X 25 PLATED	2							
44	1	26106-080452	BOLT M 8X 45 PLATED	1							
45	1	26106-080602	BOLT M 8X 60 PLATED	1							
46	1	26106-100162	BOLT M10X 16 PLATED	4							
47	1	26106-100382	BOLT M10X 38 PLATED	3							
48	1	26366-080002	NUT 8	4							
49	1	26366-100002	NUT M10	2							
50	1	26696-100002	NUT M10	8							
51	1	43400-500490	SEAL WASHER 16	2							
52	1	121750-59890	RETAINER	2							
53	1	183251-79560	CABLE (+)	1							

Fig.11. SOUND-PROOF CASE(YDG3000SE)

Fig. 11 SOUND-PROOF CASE (YDG3000SE-L5EG2)



(A)=3000SE-L5EG2

(B)=4500SE-L5EG2

(C)=

(D)=

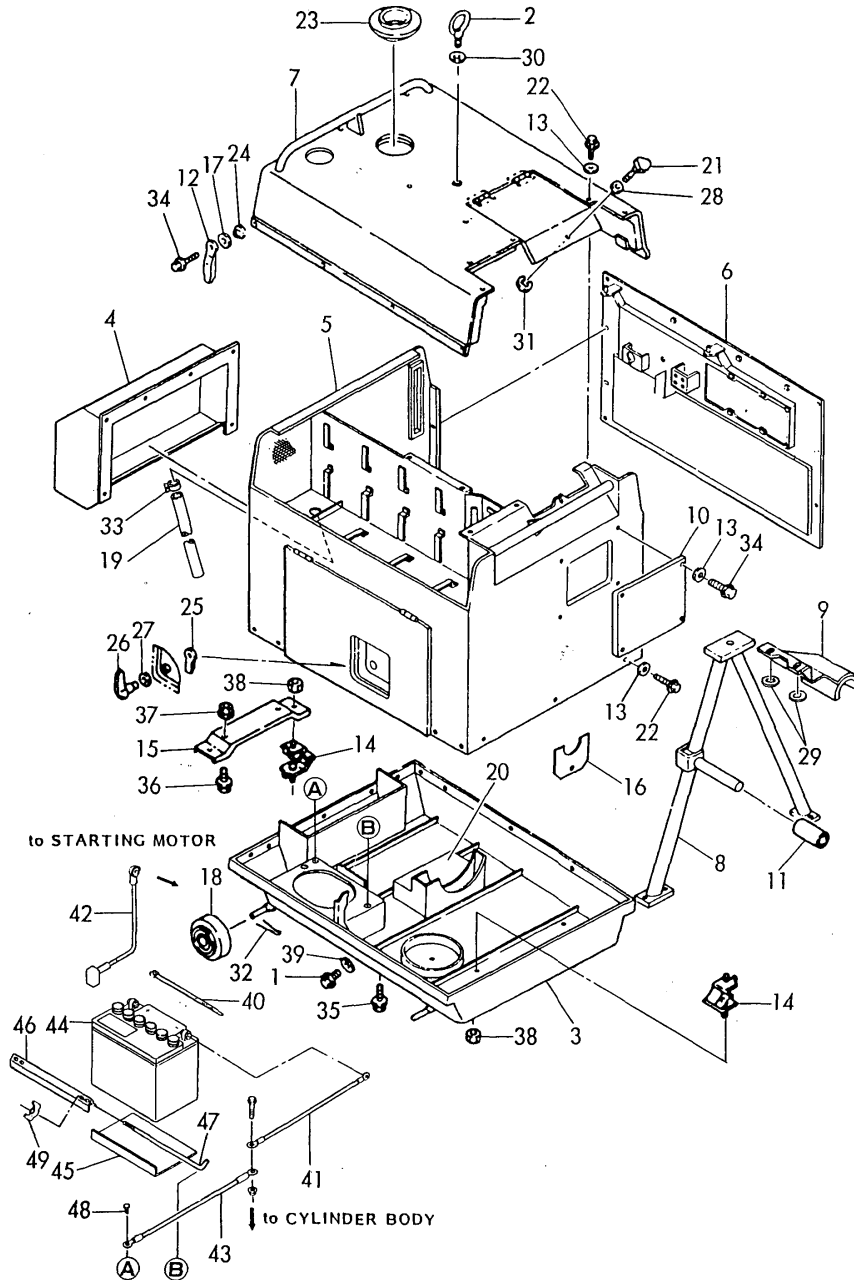
(E)=

(F)=

REF.	LEV.	PARTS NO.	DESCRIPTION	QTY						I	R
				(A)	(B)	(C)	(D)	(E)	(F)		
54	1	183920-79560	CABLE (-)	1							
54A	1	183251-79570	CABLE (-)	1							
55	1	183350-79620	BATTERY (12V-24A)	1							
56	1	183920-79620	SEAT, BATTERY	1							
57	1	183350-79630	RETAINER, BATTERY	1							
58	1	183920-79650	BOLT, BATTERY	2							
59	1	26106-060122	BOLT M 6X 12 PLATED	2							
61	1	26635-060002	WING NUT, M6	2							
62	1	183366-95240	SPONGE	1							
63	1	183366-95500	SPONGE	1							
75	1	183366-95520	SPONGE	1							
78	1	183366-95530	SPONGE	1							
81	1	183366-95550	SPONGE	1							
87	1	183366-95680	GLASS WOOL	1							
88	1	183366-95850	GLASS WOOL	1							

Fig.12. SOUND-PROOF CASE(YDG4500SE)

Fig. 12 SOUND-PROOF CASE (YDG4500SE-L5EG2)



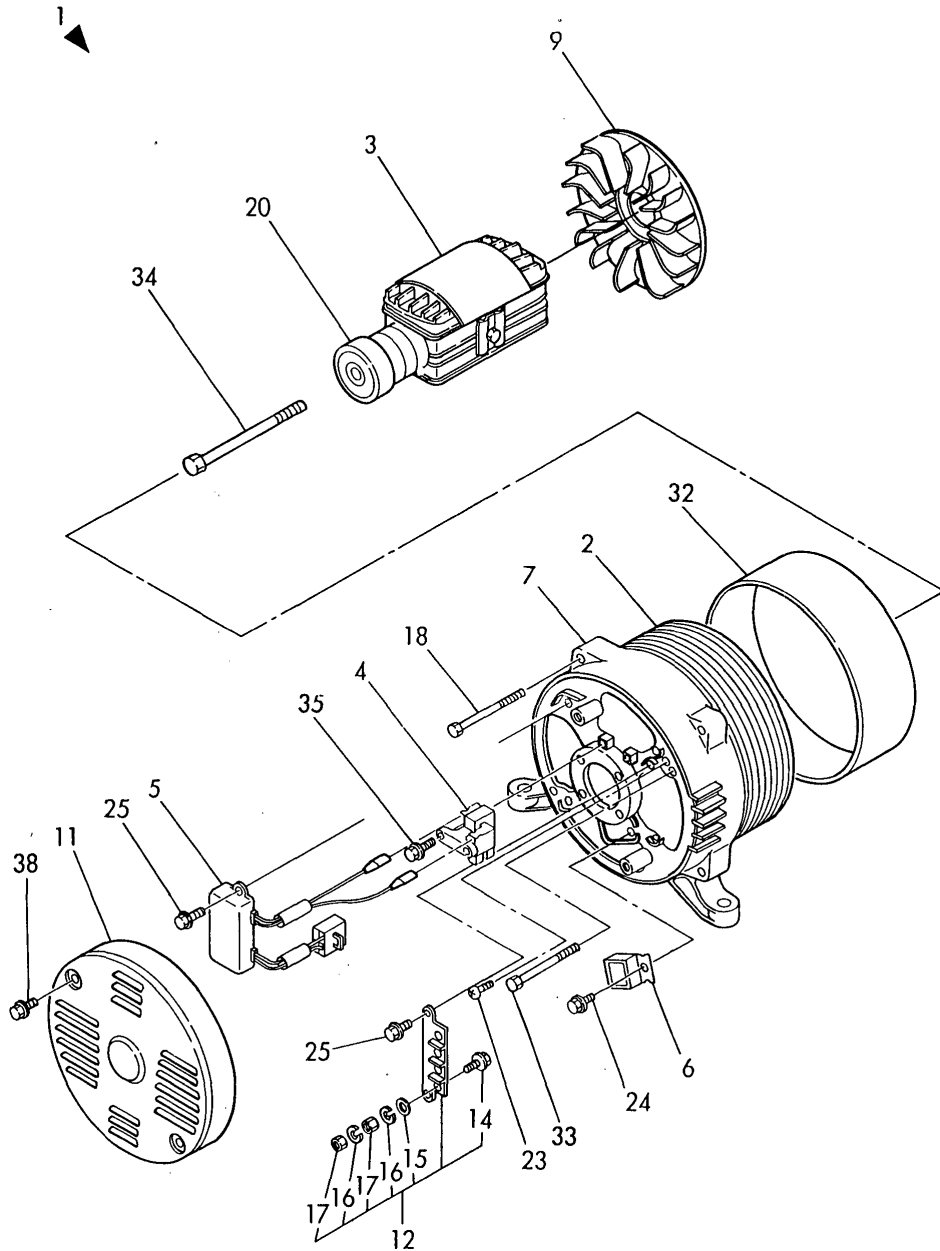
(A)=3000SE-L5EG2  
(B)=4500SE-L5EG2  
(C)=

(D)=  
(E)=  
(F)=

REF.	LEV.	PARTS NO.	DESCRIPTION	QTY						I	R
				(A)	(B)	(C)	(D)	(E)	(F)		
1	1	105425-01690	PLUG M16		2						
2	1	105990-07920	STUD		1						
3	1	183671-08051	COVER, CASE		1						
4	1	183671-08080	COVER, CASE		1						
5	1	183671-08091	COVER, CASE		1						
6	1	183667-08100	CASE, FRONT		1						
7	1	183671-08111	COVER, CASE		1						
8	1	183671-08120	FRAME		1						
9	1	183671-08150	STOPPER		1						
10	1	183671-08170	COVER, CASE		1						
11	1	183366-08180	RUBBER, STOPPER		1						
12	1	183366-08190	STOPPER, DOOR		1						
13	1	183366-08210	WASHER 6		20						
14	1	183279-08210	DAMPER		4						
15	1	183656-08240	STAY, DAMPER		1						
16	1	183671-08250	FLANGE		2						
17	1	183366-08290	WASHER, RUBBER		1						
18	1	183671-08160	WHEEL		4						
19	1	183666-08400	PIPE, WATER DRAIN		1						
20	1	183366-08450	GUIDE		1						
21	1	183101-08550	SET BOLT, DOOR		1						
22	1	183366-08900	BOLT W/WASHER M6X14		64						
23	1	183366-55210	GROMMET		1						
24	1	160810-55480	PIECE		1						
25	1	194312-61810	CAM, LOCK		1						
26	1	194555-61820	LEVER, LOCK		1						
27	1	194312-61840	WASHER BWW-626		1						
28	1	183350-55130	WASHER		1						
29	1	22137-080000	WASHER 8, POLISHED		2						
30	1	22137-140000	WASHER 14,POLISHED		1						
31	1	22272-000050	CIRCLIP E- 5		1						
32	1	22417-400360	COTTER PIN 4.0X36		4						
33	1	23000-022000	CLAMP 22		1						
34	1	183267-08910	BOLT		1						
35	1	26106-100162	BOLT M10X 16 PLATED		4						
36	1	26106-100382	BOLT M10X 38 PLATED		6						
37	1	26366-100002	NUT M10		11						
38	1	26696-100002	NUT M10		8						
39	1	43400-500490	SEAL WASHER 16		2						
40	1	121750-59890	RETAINER		2						
41	1	183650-79550	CABLE (-)		1						
42	1	183671-79560	CABLE (+)		1						
43	1	183920-79560	CABLE (-)		1						
44	1	183650-79620	BATTERY (12V-36A)		1						
45	1	183920-79620	SEAT, BATTERY		1						
46	1	183350-79630	RETAINER, BATTERY		1						
47	1	183920-79650	BOLT, BATTERY		2						
48	1	26106-060122	BOLT M 6X 12 PLATED		2						
49	1	26635-060002	WING NUT, M6		2						

Fig.13. GENERATOR(YDG3000SE)

Fig. **13** GENERATOR  
(YDG3000SE-L5EG2)



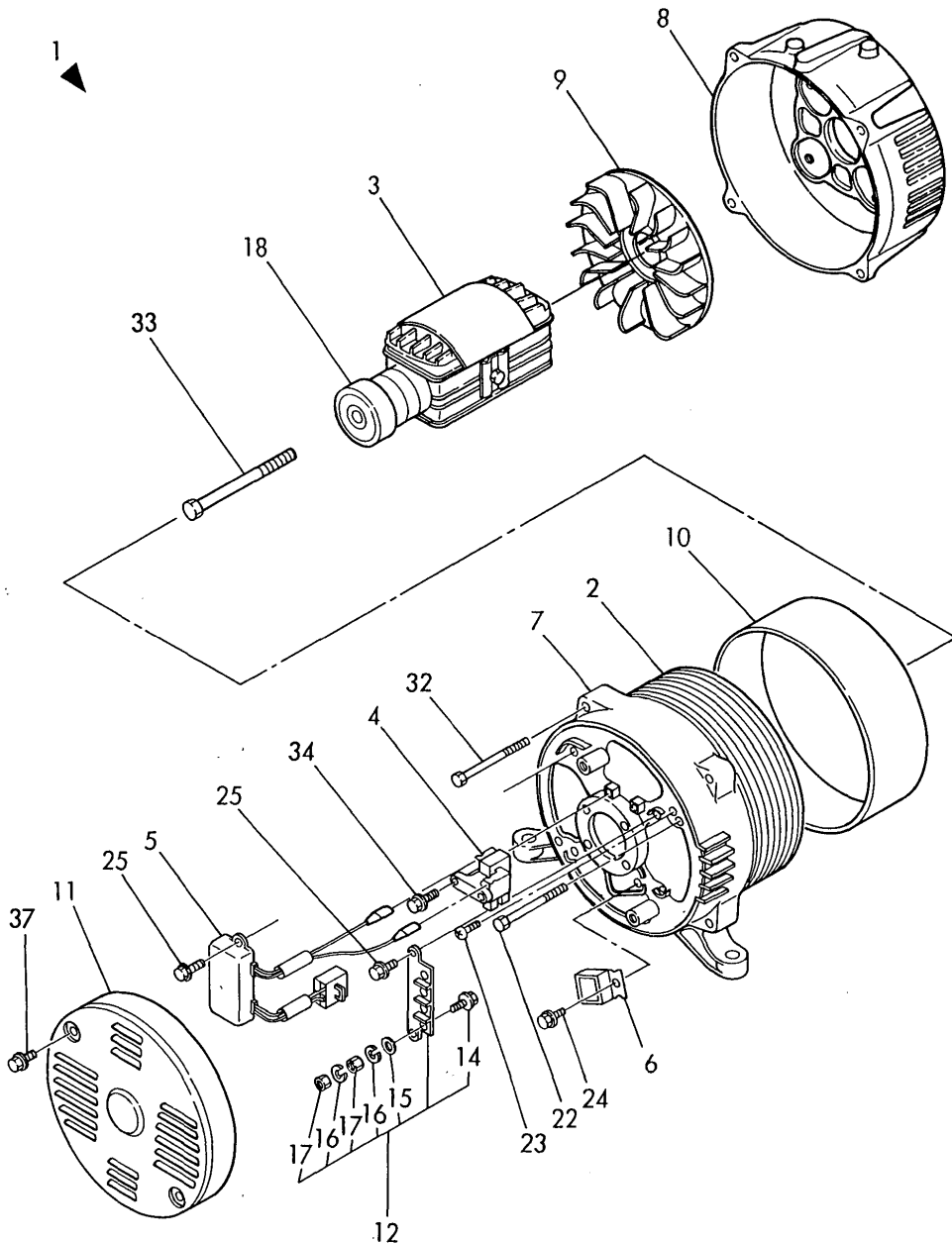
(A)=3000SE-L5EG2  
(B)=4500SE-L5EG2  
(C)=

(D)=  
(E)=  
(F)=

REF.	LEV.	PARTS NO.	DESCRIPTION	QTY						I	R
				(A)	(B)	(C)	(D)	(E)	(F)		
1	1	583382-74670	GENERATOR	1							
2	2	X121167301X	STATOR ASSY.	1							
3	2	X122119220X	ROTOR ASSY	1							
4	2	X123105500X	HOLDER ASSY, BRUSH	1							
5	2	X158013001X	CONTROL ASSY. (AVR)	1							
6	2	X158721810X	DIODE	1							
7	2	X224025410X	BRACKET, REAR	1							
9	2	X228202700X	FAN	1							
11	2	X340508350X	COVER CLEANER	1							
12	2	X421009500X	TERMINAL ASSY	1							
14	2	X8160050209	BOLT M5X20	3							
15	2	X8300057001	WASHER	3							
16	2	X8320052009	SPRING WASHER	3							
17	2	X8260053009	NUT	3							
18	2	X8167051401	SCREW, M4X140	2							
20	2	X620601800X	BEARING	1							
23	2	X8005050129	SCREW M5X12	1							
24	2	X8076053125	SCREW M5X12	2							
25	2	X8076053145	SCREW M5X14	7							
27	2	X190238800X	COUPLER, WIRE	1							
28	2	X304200610X	CLAMP	2							
32	1	183362-74090	BAND	1							
33	1	183382-74410	BOLT, THROUGH 6X115	4							
34	1	183382-74430	BOLT M10X188	1							
35	1	183282-74460	BOLT M5X18	1							
36	1	183282-74470	NUT, TERMINAL	2							
37	1	183282-74480	SPRING WASHER	2							
38	1	26023-050202	SCREW M 5X 20	2							

Fig.14. GENERATOR(YDG4500SE)

Fig. 14 GENERATOR (YDG4500SE-L5EG2)



(A)=3000SE-L5EG2  
(B)=4500SE-L5EG2  
(C)=

(D)=  
(E)=  
(F)=

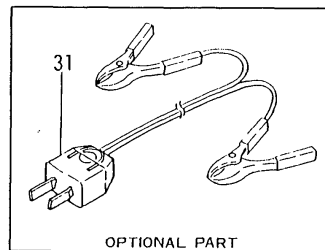
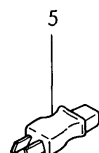
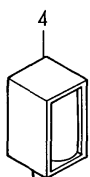
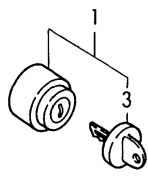
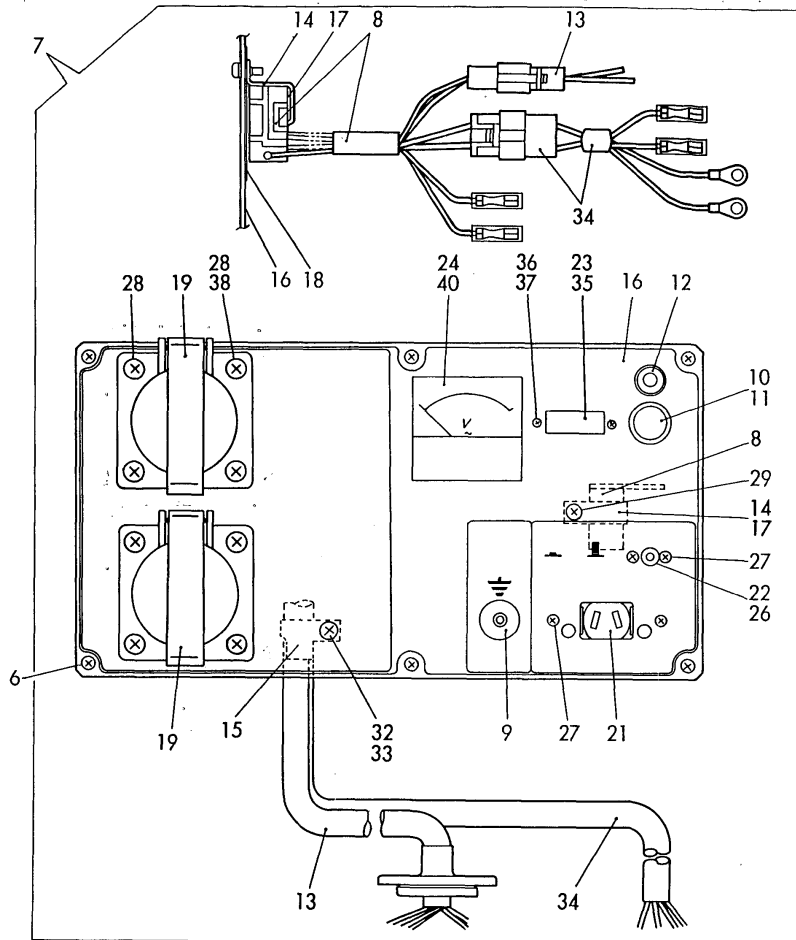
REF.	LEV.	PARTS NO.	DESCRIPTION	QTY						I	R
				(A)	(B)	(C)	(D)	(E)	(F)		
1	1	583651-74670	GENERATOR		1						
2	2	X121165120X	STATOR ASSY.		1						
3	2	X122121310X	ROTOR ASSY.		1						
4	2	X123105500X	HOLDER ASSY, BRUSH		1						
5	2	X158010820X	CONTROL ASSY		1						
6	2	X158721810X	DIODE		1						
7	2	X224022200X	BRACKET (REAR)		1						
8	2	X224211310X	BRACKET (FRONT)		1						
9	2	X228202700X	FAN		1						
10	2	X340014430X	COVER BAND		1						
11	2	X340507980X	COVER CLEANER		1						
12	2	X421009500X	TERMINAL ASSY		1						
14	2	X8160050209	BOLT M5X20		3						
15	2	X8300057001	WASHER		3						
16	2	X8320052009	SPRING WASHER		3						
17	2	X8260053009	NUT		3						
18	2	X620601800X	BEARING		1						
22	2	X501029520X	BOLT M5X175		2						
23	2	X8005050129	SCREW M5X12		1						
24	2	X8076053125	SCREW M5X12		2						
25	2	X8076053145	SCREW M5X14		7						
27	2	X304200610X	CLAMP		1						
31	2	X8300050001	WASHER		2						
32	1	183682-74410	BOLT, THROUGH M6X150		4						
33	1	183650-74430	BOLT		1						
34	1	183282-74460	BOLT M5X18		1						
35	1	183282-74470	NUT, TERMINAL		2						
36	1	183282-74480	SPRING WASHER		2						
37	1	26023-050102	SCREW M 5X 10		2						

Fig.15. PANEL BOX(YDG3000SE)

(A)=3000SE-L5EG2  
(B)=4500SE-L5EG2  
(C)=

(D)=  
(E)=  
(F)=

Fig. 15 PANEL BOX  
(YDG3000SE-L5EG2)



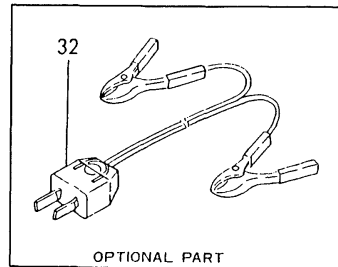
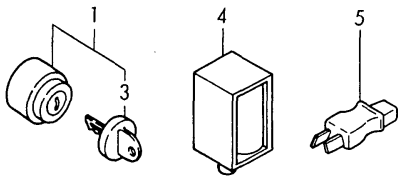
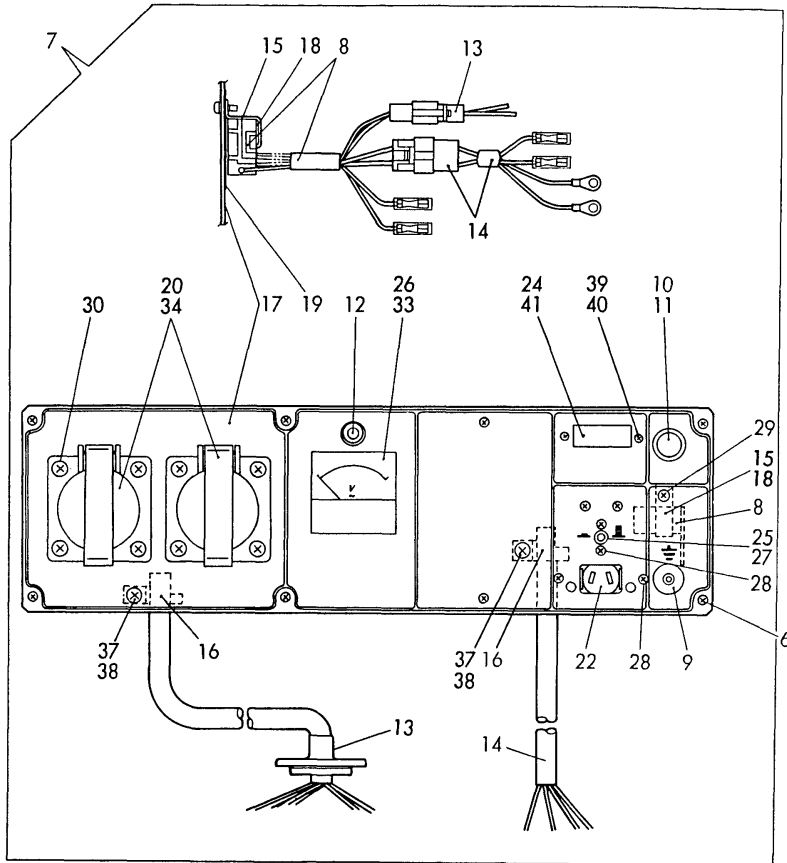
Remarks  
(1) OPTIONAL PART.

REF.	LEV.	PARTS NO.	DESCRIPTION	QTY						I	R
				(A)	(B)	(C)	(D)	(E)	(F)		
1	1	160797-77250	KEY, SWITCH	1							
3	2	160797-77270	KEY, REVERSE	1							
4	1	183250-91690	DC, SOLENOID	1							
5	1	183720-91790	PLUG DC12V	1							
6	1	26022-050102	SCREW M 5X 10	6							
7	1	583356-91710	BOX ASSY, PANEL	1							
8	2	X158725000X	RELAY	1							
9	2	X158502700X	TERMINAL (EARTH)	1							
10	2	X158503310X	OIL ALERT LAMP	1							
11	3	X602000000X	BULB (E-10 24V-2W)	1							
12	2	X158703710X	LAMP ASSY, PILOT	1							
13	2	X190054800X	HARNESS, WIRE	1							
14	2	X322045500X	BRACKET	1							
15	2	X322100500X	HOLDER	1							
16	2	X322337700X	PANEL, BOX	1							
17	2	X412011000X	CUSHION	1							
18	2	X430119800X	SEAT	1							
19	2	X601216000X	PLUG SOCKET (YELLOW)	2							
21	2	X601202710X	PLUG SOCKET (DC 12V)	1							
22	2	X603604201X	NO FUSE BREAKER (DC)	1							
23	2	X603612440X	CIRCUIT BREAKER	1							
24	2	X604005210X	VOLT METER (AC300V)	1							
26	2	X640102700X	COVER (DC NFB)	1							
27	2	X8001030083	SCREW M3X 8	4							
28	2	X8010040103	SCREW M 4X 10	8							
29	2	X8002040103	SCREW M4X10	1							
31	1	183210-91880	CABLE, CHARGING	1							1
32	1	X502005540X	NUT M5	1							
33	1	X8002050103	SCREW	1							
34	1	X190233830X	HARNESS, WIRE	1							
35	1	X640102500X	COVER (NFB)	1							
36	1	X8002040123	SCREW M4X12	2							
37	1	X8260043001	NUT M4	2							
38	1	X628817400X	PLATE	2							
40	1	X502006530X	NUT M3	2							

Fig.16. PANEL BOX(YDG4500SE)

(A)=3000SE-L5EG2 (D)=  
 (B)=4500SE-L5EG2 (E)=  
 (C)= (F)=

Fig. 16 PANEL BOX  
 (YDG4500SE-L5EG2)



Remarks  
 (1) OPTIONAL PART.

REF.	LEV.	PARTS NO.	DESCRIPTION	Q'TY						I	R
				(A)	(B)	(C)	(D)	(E)	(F)		
1	1	160797-77250	KEY, SWITCH		1						
3	2	160797-77270	KEY, REVERSE		1						
4	1	183250-91690	DC, SOLENOID		1						
5	1	183720-91790	PLUG DC12V		1						
6	1	26022-050102	SCREW M 5X 10		8						
7	1	583656-91710	BOX ASSY, PANEL		1						
8	2	X158725000X	RELAY		1						
9	2	X158502700X	TERMINAL (EARTH)		1						
10	2	X158503310X	OIL ALERT LAMP		1						
11	3	X602000000X	BULB (E-10 24V-2W)		1						
12	2	X158703740X	PILOT LAMP		1						
13	2	X190054700X	HARNES, WIRE		1						
14	2	X190233820X	WIRE HANES		1						
15	2	X322045500X	BRACKET		1						
16	2	X322100500X	HOLDER		2						
17	2	X322337900X	PANEL, BOX		1						
18	2	X412011000X	CUSHION		1						
19	2	X430119800X	SEAT		1						
20	2	X601216000X	PLUG SOCKET (YELLOW)		2						
22	2	X601202710X	PLUG SOCKET (DC 12V)		1						
24	2	X603612410X	BREAKER		1						
25	2	X603604201X	NO FUSE BREAKER (DC)		1						
26	2	X604005210X	VOLT METER (AC300V)		1						
27	2	X640102700X	COVER (DC NFB)		1						
28	2	X8001030083	SCREW M3X 8		4						
29	2	X8002040103	SCREW M4X10		1						
30	2	X8010040103	SCREW M 5X 20		8						
32	1	183210-91880	CABLE, CHARGING		1						1
33	1	X502006530X	NUT M3		2						
34	1	X628817400X	PLATE		2						
37	1	X8002050103	SCREW		2						
38	1	X8260052001	NUT		2						
39	1	X8002040123	SCREW M4X12		2						
40	1	X8260041001	NUT M4		2						
41	1	X640102500X	COVER (NFB)		1						

## Part Number Index

All parts are stipulated in the order of part numbers.

(Depending on the area in which the part is used.)

This index will display the location of the part according to each part number.



## PARTS No. INDEX

PARTS No.	Fig.	Ref.No.
101158-11180	3	14
101504-55051	8	6
103338-32570	5	4
	10	74
103854-01221	2	11
103854-55220	8	9
104200-23201	2	58
104211-11370	3	35
		64
105010-11490	3	34
		63
105015-55040	8	5
105025-01220	1	13
105225-01240	1	18
105225-66990	6	62
105425-01690	1	32
	11	1
	12	1
105546-51020	7	4
105546-51330	7	15
105990-07920	11	2
	12	2
106990-44660	8	18
		21
114250-01800	1	36
114250-01830	1	41
114250-01840	1	42
	10	59
114250-02030	1	50
114250-03591	3	53
114250-03640	3	54
114250-11240	3	36
114250-11290	3	19
114250-11310	3	48
	10	65
114250-11460	3	24
	10	64
114250-11600	3	26
114250-11651	3	28
114250-11900	3	38
114250-11951	3	50
114250-12210	4	6
	10	70
114250-12520	4	14
114250-12550	4	22
114250-12560	4	18
114250-12580	4	20
114250-13200	4	29
	10	72
114250-14200	2	5

PARTS No.	Fig.	Ref.No.
114250-14260	2	7
114250-21550	2	22
114250-23200	2	57
114250-23220	2	59
114250-23250	2	60
114250-32010	5	1
114250-32070	5	3
114250-35070	5	7
114250-35150	1	66
114250-45300	6	9
114250-45310	6	12
114250-45330	6	17
114250-51080	7	5
114250-51150	7	11
114250-51160	7	12
114250-51180	7	9
114250-51190	7	10
114250-51300	7	13
114250-51340	7	16
114250-51600	7	18
114250-51640	7	19
114250-51650	7	20
114250-53080	7	29
114250-53120	7	30
114250-53130	7	31
114250-53140	7	32
114250-53210	7	33
114250-53300	7	34
114250-53331	7	39
114250-53400	7	40
114250-61900	5	27
114250-66200	6	46
114250-66440	6	53
114250-66550	6	54
114250-92101	10	28
114250-92130	10	29
114250-92600	10	20
114252-12550	4	23
114252-12560	4	19
114252-66060	6	42
114252-66120	6	45
114252-66252	6	50
114350-01200	1	6
114350-01210	1	9
114350-01220	1	12
114350-01250	1	15
114350-01340	1	21
	10	50
114350-01380	1	24
	10	53

PARTS No.	Fig.	Ref.No.
114350-01412	1	27
	10	56
114350-02100	1	52
114350-02113	1	55
114350-02200	1	68
114350-02210	1	71
114350-11021	3	1
114350-11101	3	5
114350-11113	3	8
114350-11120	3	11
114350-11340	3	22
	10	62
114350-11470	3	25
114350-12011	4	2
114350-12201	4	5
	10	68
114350-14450	2	9
114350-22301	2	40
114350-45201	6	5
114350-45320	6	13
114350-45340	6	19
114350-59800	8	33
114350-92311	10	38
114350-92350	10	41
114351-78250	9	29
114351-78750	9	30
114351-78760	9	31
114361-92300	10	35
114362-77010	9	1
114650-01230	1	7
114650-01240	1	10
114650-01250	1	16
114650-01260	1	19
114650-01340	1	22
	10	51
114650-01380	1	25
	10	54
114650-01412	1	28
	10	57
114650-02100	1	53
114650-02150	1	56
114650-02200	1	69
114650-02210	1	72
114650-07450	10	2
114650-11010	3	2
114650-11100	3	6
114650-11121	3	12
114650-11261	3	20
114650-11310	3	49
	10	66

PARTS No.	Fig.	Ref.No.
114650-11340	3	23
	10	63
114650-11600	3	27
114650-11652	3	29
114650-11951	3	51
114650-12020	4	3
114650-12210	4	7
	10	71
114650-12300	4	8
	10	69
114650-12350	4	9
114650-12530	4	17
114650-12540	4	21 A
114650-12550	4	21 B
114650-12590	4	21
114650-13200	10	73
114650-14200	2	6
114650-14401	2	10
114650-21551	2	23
114650-22300	2	41
114650-32010	5	2
114650-45200	6	6
114650-51300	7	14
114650-53000	7	28
114650-53300	7	35
114650-59800	8	34
114650-59850	8	42
114650-66600	6	55
114650-92310	10	39
114650-92350	10	42
114654-11110	3	9
114654-45341	6	16
114658-13800	4	38
114660-01470	1	31
114660-45110	6	2
114660-45400	6	22
114660-45450	6	24
114661-92300	10	36
114662-21691	2	26
114666-45330	6	18
114870-53000	7	27
114870-66010	6	40
114970-66010	6	41
119620-11180	3	15
121450-61520	5	26
121750-59890	11	52
	12	40
122710-01220	2	12
124060-23100	2	62
124550-51350	7	17

## PARTS No. INDEX

PARTS No.	Fig.	Ref.No.
124722-59050	8	25
129100-61850	3	65
129792-22400	2	44
160110-01870	1	73
160110-02220	1	57
		59
160120-76940	6	30
160330-92730	10	21
160710-55100	8	7
160710-78710	9	32
160797-77250	15	1
	16	1
160797-77270	15	3
	16	3
160810-55480	11	31
	12	24
160910-01740	1	34
171008-03990	8	17
171022-39470	1	77
183101-08550	11	27
	12	21
183210-07390	10	13
183210-08810	11	28
183210-91880	15	31
	16	32
183250-08220	11	16
183250-39450	1	4
183250-55320	8	12
183250-66331	6	52
183250-91690	15	4
	16	4
183251-07130	10	3
183251-07170	10	4
183251-07190	10	5
183251-79560	11	53
183251-79570	11	54 A
183256-78300	9	24
183256-78310	9	25
183266-07250	10	9
183266-08360	11	21
183266-08460	11	23
183266-66110	6	43
183266-66210	6	47
183266-66230	6	48
183267-07230	10	6
183267-08100	11	6
183267-08910	11	42
	12	34
183267-66240	6	49
183267-66350	6	38

PARTS No.	Fig.	Ref.No.
183267-91390	9	26
183279-08210	12	14
183282-74460	13	35
	14	34
183282-74470	13	36
	14	35
183282-74480	13	37
	14	36
183350-01450	1	30
183350-21350	2	88
183350-51200	7	7
183350-55130	6	63
	11	35
	12	28
183350-77400	9	23
183350-79620	11	55
183350-79630	11	57
	12	46
183350-92360	10	44
183362-74090	13	32
183366-07240	10	8
183366-07251	10	10
183366-07280	10	11
183366-08051	11	3
183366-08080	11	4
183366-08091	11	5
183366-08111	11	7
183366-08120	11	8
183366-08140	11	9
183366-08150	11	11
183366-08170	11	12
183366-08180	11	13
	12	11
183366-08190	11	14
	12	12
183366-08210	11	15
	12	13
183366-08290	1	75
	11	20
	12	17
183366-08351	1	74
183366-08400	11	22
183366-08450	12	20
183366-08460	11	24
183366-08470	11	25
183366-08480	11	26
183366-08900	11	29
	12	22
183366-12530	4	16
183366-12590	4	24

PARTS No.	Fig.	Ref.No.
183366-13300	4	31
183366-13601	4	34
183366-21590	2	25
183366-39460	1	76
183366-45111	6	1
183366-45220	6	7
183366-45300	6	10
183366-45320	6	14
183366-45410	6	23
183366-45460	6	26
183366-45600	6	21
183366-55120	8	10
183366-55150	8	8
183366-55210	11	30
	12	23
183366-59010	8	19
183366-59330	8	27
183366-59351	8	30
183366-95240	11	62
183366-95500	11	63
183366-95520	11	75
183366-95530	11	78
183366-95550	11	81
183366-95680	11	87
183366-95850	11	88
183367-07370	10	12
183382-74410	13	33
183382-74430	13	34
183392-08230	11	19
183392-08250	11	17
183650-51100	7	8
183650-74430	14	33
183650-79550	12	41
183650-79620	12	44
183656-08240	12	15
183662-92350	10	45
183666-08400	12	19
183666-59330	8	28
183666-59351	8	31
183666-66111	6	44
183667-08100	12	6
183671-08051	12	3
183671-08080	12	4
183671-08091	12	5
183671-08111	12	7
183671-08120	12	8
183671-08150	12	9
183671-08160	12	18
183671-08170	12	10
183671-08250	12	16

PARTS No.	Fig.	Ref.No.
183671-12520	4	15
183671-12590	4	25
183671-13210	4	30
183671-13300	4	32
183671-13600	4	35
183671-13650	4	36
183671-13660	4	37
183671-45301	6	11
183671-45310	6	8
183671-45330	6	15
183671-45460	6	27
183671-45480	6	28
183671-59010	8	20
183671-59060	8	26
183671-79560	12	42
183682-74410	14	32
183720-55210	6	29
	8	11
183720-91790	15	5
	16	5
183920-79560	11	54
	12	43
183920-79620	11	56
	12	45
183920-79650	11	58
	12	47
194312-61810	11	32
	12	25
194312-61840	11	34
	12	27
194555-61820	11	33
	12	26
43400-500490	1	49
	10	60
	11	51
	12	39
583356-07130	10	15
583356-91710	15	7
583382-74670	13	1
583651-74670	14	1
583656-07130	10	16
583656-91710	16	7
714350-22502	2	36
714350-22542	2	50
714350-22550	2	78
714350-23600	2	64
714350-23610	2	82
714350-23620	2	85
714350-23704	2	54
714350-61500	5	20

## PARTS No. INDEX

PARTS No.	Fig.	Ref.No.
714350-92602	10	47
714370-11660	3	31
714371-01560	1	1
714380-22580	2	74
714380-22620	2	46
714380-22720	2	32
714650-22502	2	37
714650-22542	2	51
714650-22550	2	79
714650-23600	2	65
714650-23610	2	83
714650-23620	2	86
714650-23700	2	55
714650-53100	7	25
714650-61500	5	21
714650-92601	10	48
714660-14582	2	2
714660-22580	2	75
714660-22623	2	47
714660-22723	2	33
714670-11660	3	32
714671-01560	1	2
714689-28510	2	69
714770-61700	5	12
714870-53100	7	24
714880-14580	2	1
714970-61700	5	13
783350-51701	7	1
783366-12560	4	10
783366-55700	8	1
783392-21700	2	14
783650-51700	7	2
783671-12560	4	11
783671-55700	8	2
783692-21700	2	15
7E4133-99290	10	22
X121165120X	14	2
X121167301X	13	2
X122119220X	13	3
X122121310X	14	3
X123105500X	13	4
	14	4
X158010820X	14	5
X158013001X	13	5
X158502700X	15	9
	16	9
X158503310X	15	10
	16	10
X158703710X	15	12
X158703740X	16	12

PARTS No.	Fig.	Ref.No.
X158721810X	13	6
	14	6
X158725000X	15	8
	16	8
X190054700X	16	13
X190054800X	15	13
X190233820X	16	14
X190233830X	15	34
X190238800X	13	27
X211412105	9	5
X211416603	9	14
X211427501	9	18
X21142835	9	21
X21143215	9	7
X211445508	9	13
X21145312	9	6
X21145352	9	9
	15	15
X211456013	9	17
X21145867	9	20
X211461104	9	2
X211468005	9	19
X21147155	9	4
X211473002	9	8
X211478006	9	16
X21148110	9	3
X21148313	9	11
X211489001	9	10
X21149314	9	12
X224022200X	14	7
X224025410X	13	7
X224211310X	14	8
X228202700X	13	9
	14	9
X304200610X	13	28
	14	27
X322045500X	15	14
	16	15
X322100500X	15	15
	16	16
X322337700X	15	16
X322337900X	16	17
X340014430X	14	10
X340507980X	14	11
X340508350X	13	11
X412011000X	15	17
	16	18
X421009500X	13	12
	14	12
X430119800X	15	18

PARTS No.	Fig.	Ref.No.
X430119800X	16	19
X501029520X	14	22
X502005540X	15	32
X502006530X	15	40
	16	33
X601202710X	15	21
	16	22
X601216000X	15	19
	16	20
X602000000X	15	11
	16	11
X603604201X	15	22
	16	25
X603612410X	16	24
X603612440X	15	23
X604005210X	15	24
	16	26
X620601800X	13	20
	14	18
X628817400X	15	38
	16	34
X640102500X	15	35
	16	41
X640102700X	15	26
	16	27
X8001030083	15	27
	16	28
X8002040103	15	29
	16	29
X8002040123	15	36
	16	39
X8002050103	15	33
	16	37
X8005050129	13	23
	14	23
X8010040103	15	28
	16	30
X8076053125	13	24
	14	24
X8076053145	13	25
	14	25
X8160050209	13	14
	14	14
X8167051401	13	18
X8260041001	16	40
X8260043001	15	37
X8260052001	16	38
X8260053009	13	17
	14	17
X8300050001	14	31

PARTS No.	Fig.	Ref.No.
X8300057001	13	15
	14	15
X8320052009	13	16
	14	16



***YANMAR CO.,LTD.***